



Creating Sanctuary for Female Consumers

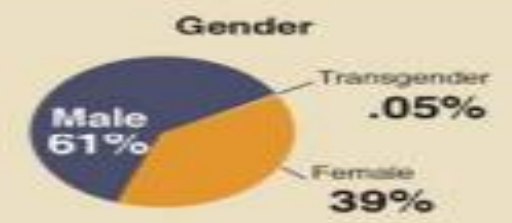
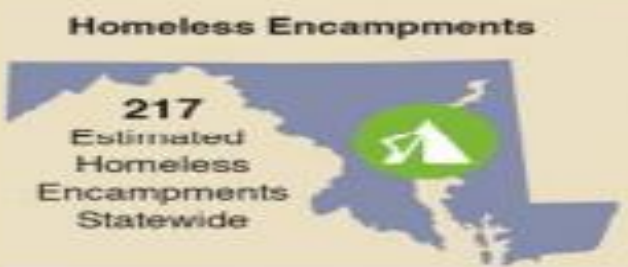
*includes all individuals identifying as female

ATHENA HANIOTIS

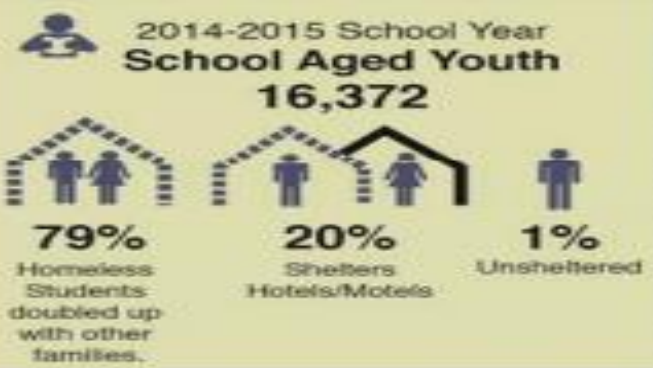
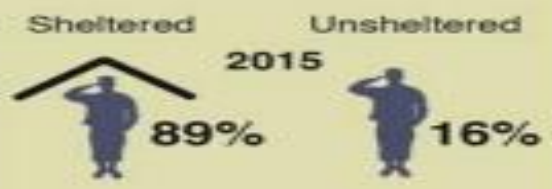
Women Experiencing Homelessness

Characteristic	All Homeless People		Sheltered People		Unsheltered People	
	#	%	#	%	#	%
Total	549,928	100.0	373,571	100.0	176,357	100.0
Gender						
Female	217,268	39.5	165,780	44.4	51,488	29.2
Male	330,890	60.2	206,999	55.4	123,891	70.3
Transgender	1,770	0.3	792	0.2	978	0.6
Ethnicity						
Non-Hispanic	428,629	77.9	286,430	76.7	142,199	80.6
Hispanic	121,299	22.1	87,141	23.3	34,158	19.4
Race						
White	265,660	48.3	163,881	43.9	101,779	57.7
African American	215,177	39.1	168,623	45.1	46,554	26.4
Asian	5,603	1.0	3,476	0.9	2,127	1.2
Native American	15,229	2.8	7,880	2.1	7,349	4.2
Pacific Islander	8,734	1.6	4,499	1.2	4,235	2.4
Multiple Races	39,525	7.2	25,212	6.8	14,313	8.1

The Counted Homeless in Maryland, 2016

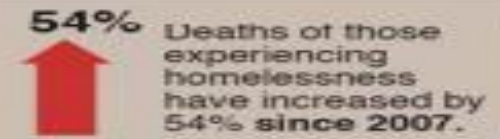


Specialized Populations



Deaths of the Homeless

Over the last decade approximately 1,029 people experiencing homelessness have died statewide.



Deaths of the homeless increased by 26% during the month of January.

Proposed Solutions

- Increased access to affordable housing.
- More low-barrier shelter options.
- Housing First.
- Increased funding for supportive services.



Walk in my Shoes

- **GETTING THE INFORMATION**
- **MAKING AN APPOINTMENT**
- **WALKING IN**
- **WAITING**
- **PROVIDER**

Concerns for Women

- **MALE DOMINATED SPACES**
- **DIFFERING HOUSING AND HEALTH NEEDS AND RESOURCES**
 - Shelter availability and survival housing
 - Birth control, access to feminine products
- **IMPACT OF SEX/SEXUALITY**
 - Sex Education - consent and safer sex
 - Sexual Assault
 - Alternative Lifestyles

Lessons

- **SERVICES CAN BE DIFFICULT TO NAVIGATE OR INADEQUATE FOR WOMEN**
- **EXPERIENCES WITH INDEPENDENCE, TRUST AND SAFETY MAKE SERVICES DIFFICULT TO NAVIGATE**
- **NEED TO MAKE SPACES OPEN AND WELCOMING TO WOMEN WHO CAN ALREADY BE IN VULNERABLE, FRUSTRATED, OR DESPERATE SITUATIONS**

Discussion

- **WHAT WOULD IT LOOK LIKE TO HAVE SAFETY IN DIFFERENT PHASES AND SPACES AT HEALTH CENTERS?**
 - Getting the Information
 - Walking in
 - Waiting Area
 - With Provider
- **HOW CAN WE CARE FOR THE PARTICULAR VULNERABILITIES OF WOMEN AND THE IMPACT OF SEXUALITY?**

Ideas for Creating Sanctuary

- GETTING INFORMATION TO PLACES WOMEN ACCESS CARE OR SERVICES
- GIVE GOOD, HONEST INFORMATION TO CLIENTS AND WITHIN THE ORGANIZATION
- APPROACHABLE, EMPATHETIC STAFF (TRAINED IN TRAUMA-INFORMED CARE/APPROACHES AND CULTURAL HUMILITY)
 - At least one security or front desk staff should be female oriented
- HOLD DISCUSSIONS ON HOW TO CREATE SAFE ENTRANCE
 - Respectful interactions ; Protected waiting space (if separate space not observation tank)
- NON-JUDGMENTAL, PEOPLE NEED TO FEEL HEARD AND RESPECTED
- RESOURCES FOR SEX EDUCATION AND SEXUAL ASSAULT (EITHER INTERNAL OR REFERRAL) BUT KNOW AND SUPPORT PROCESS

References

HENRY, M., WATTS, R., ROSENTHAL, L., SHIVJI, A., AND ABT ASSOCIATES. (NOVEMBER 2016). **2016 ANNUAL HOMELESS ASSESSMENT REPORT (AHAR) TO CONGRESS**. US DEPARTMENT OF HOUSING AND URBAN DEVELOPMENT.

MARYLAND INTERAGENCY COUNCIL ON HOMELESSNESS. (OCTOBER 2016). **2016 REPORT ON HOMELESSNESS**.

PRICE, C., WHEELER, C., SHELTON, J., & MAURY, M. (EDS.). (2016). **AT THE INTERSECTIONS: A COLLABORATIVE REPORT ON LGBTQ YOUTH HOMELESSNESS**. TRUE COLORS FUND AND THE NATIONAL LGBTQ TASK FORCE.