



Chronic Disease Management

***Undocumented and Homeless:
How to make it work***

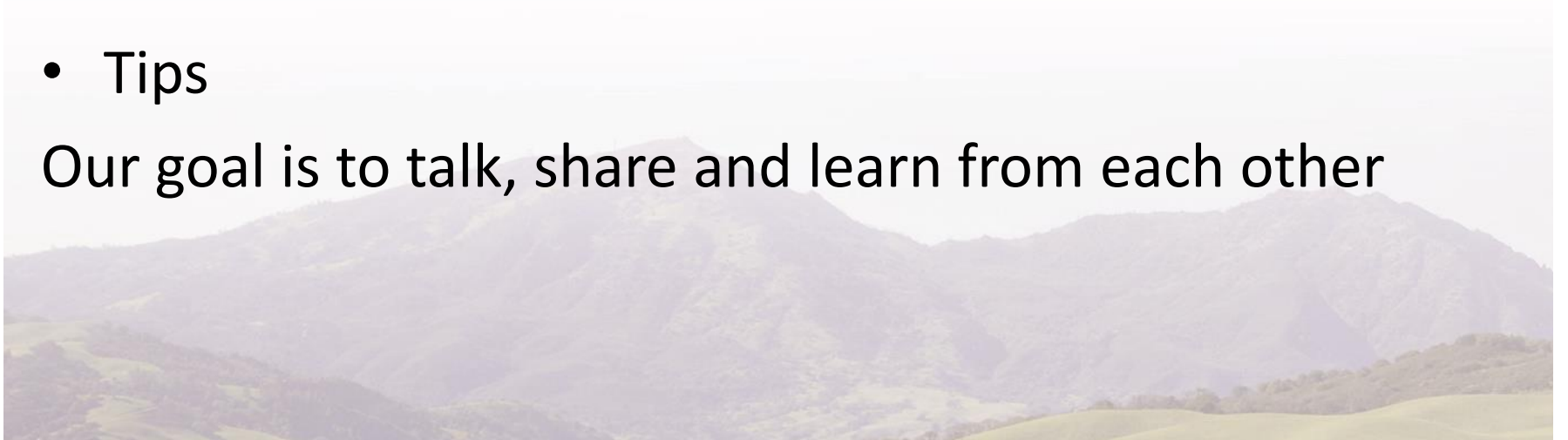
A Think Tank

*Discussion regarding emerging issues & key questions
for HCH community: Let's talk*

Agenda & Goals for Think Tank

- Introduction
 - Contra Costa County Health Care for the Homeless
- Barriers to Care for the Undocumented
- Partnerships
- Chronic Diseases
- Tools-
- Tips

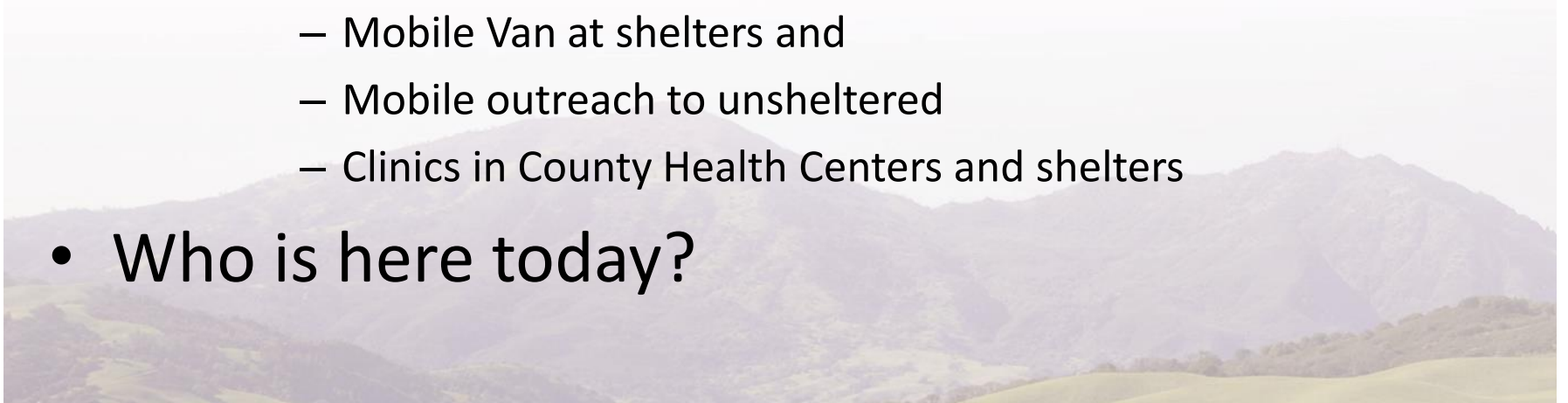
Our goal is to talk, share and learn from each other



Contra Costa Public Health Clinic Services

Health Care for the Homeless

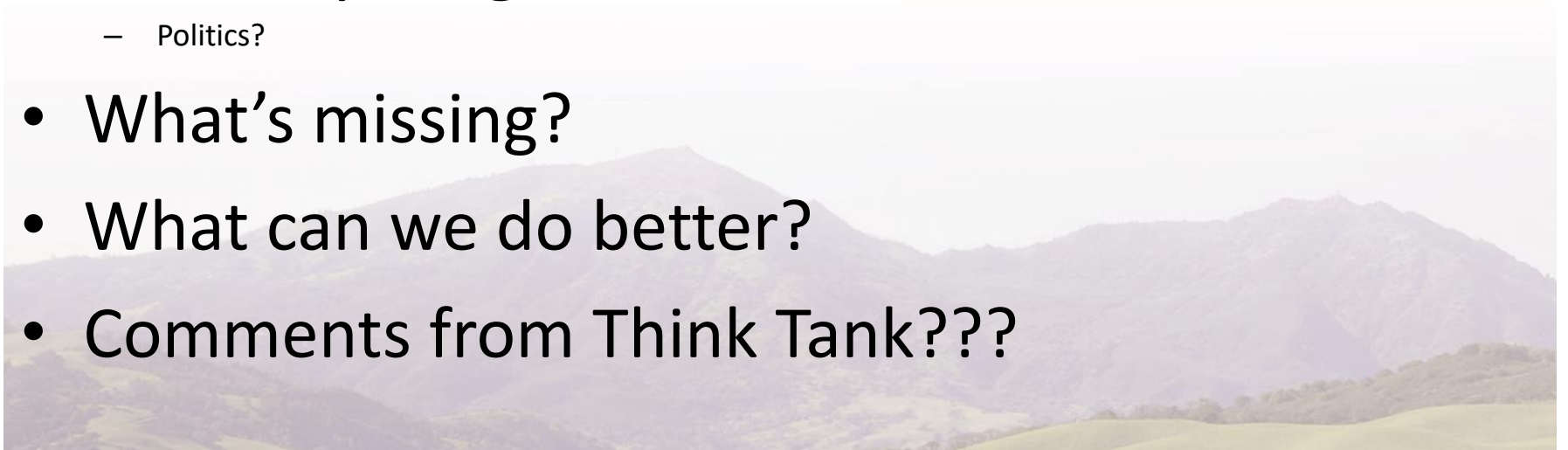
- Who we are
 - County based FQHC with strong Collaboration between Ambulatory Care and Public Health
 - Located in the San Francisco Bay Area-Suburban Population in sprawling county
 - We provide variety of services in variety of venues
 - Mobile Van at shelters and
 - Mobile outreach to unsheltered
 - Clinics in County Health Centers and shelters
- Who is here today?



Barriers to Care for Undocumented

Client Survey Response

- Who are the undocumented?
 - Not only immigrants
- What prompted you to come in?
- Was there a delay and why?
- What is your greatest concern?
 - Politics?
- What's missing?
- What can we do better?
- Comments from Think Tank???



Chronic Disease Management

Common Conditions

- **Diabetes**
- **Hypertension**
- **Cancer**
 - Get a diagnosis
- **Depression**
 - Familias Unidas
 - Catholic and faith based support groups and parenting groups
- **Addiction**
 - Alcoholics Anonymous
 - Narcotics Anonymous
- **Infectious Disease**
- **Contraceptive Management**
 - FPACT-BCCTP
- **Cancer Screening and prevention**
 - FPACT-Breast and Cervical Cancer Screening Program
- **Clinical Situations to discuss—Peer support and tips**

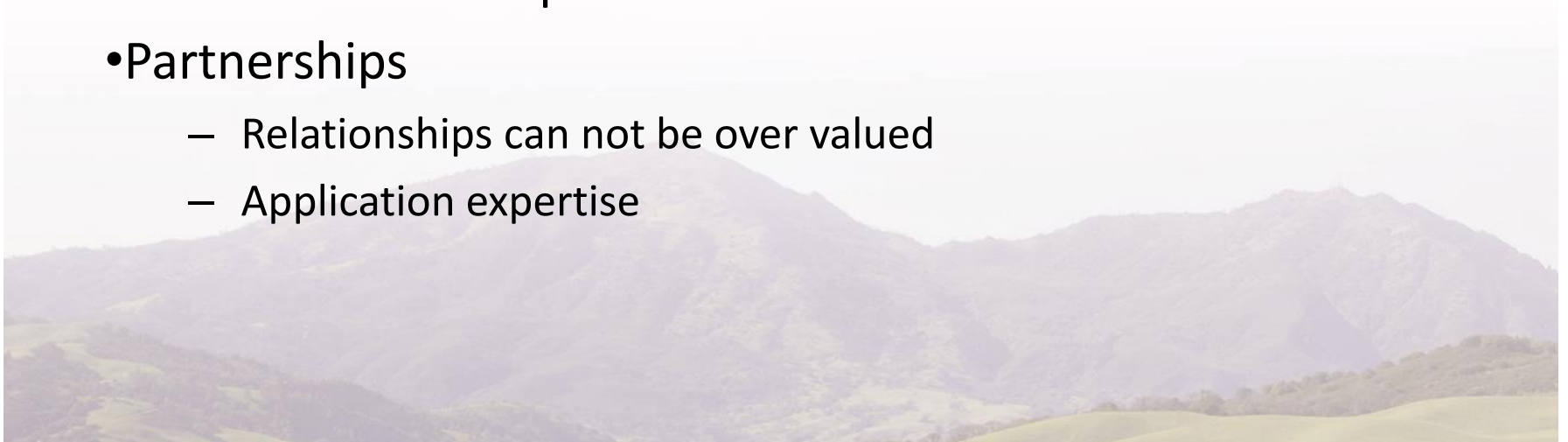
Partnerships and Resources

- Government Resources
 - Permanent Residency Under Color of Law (PRUCOL) Status
 - Family Pact (FPACT)
 - Every Woman Counts
 - Breast & Cervical Cancer Treatment Program (BCCTP)
 - States provide limited coverage for diagnosis only
- Teaching Institutions-Clinical Trials
- Industry Resources-Pharmaceutical
 - **Americares!!**
 - **Patient assistance Programs (PAPS) No SS requested**
 - Needymeds.org
 - Rxassist.org
 - Pparx.org
- Service Organizations
 - Rotary Club- Rota Care
 - Lions
- Non-profits
 - Komen, Dana Favre, ACA, MS Society, Leukemia Foundation...
- Prescription Plans
 - Walmart \$4-Walgreens-Cost-Co



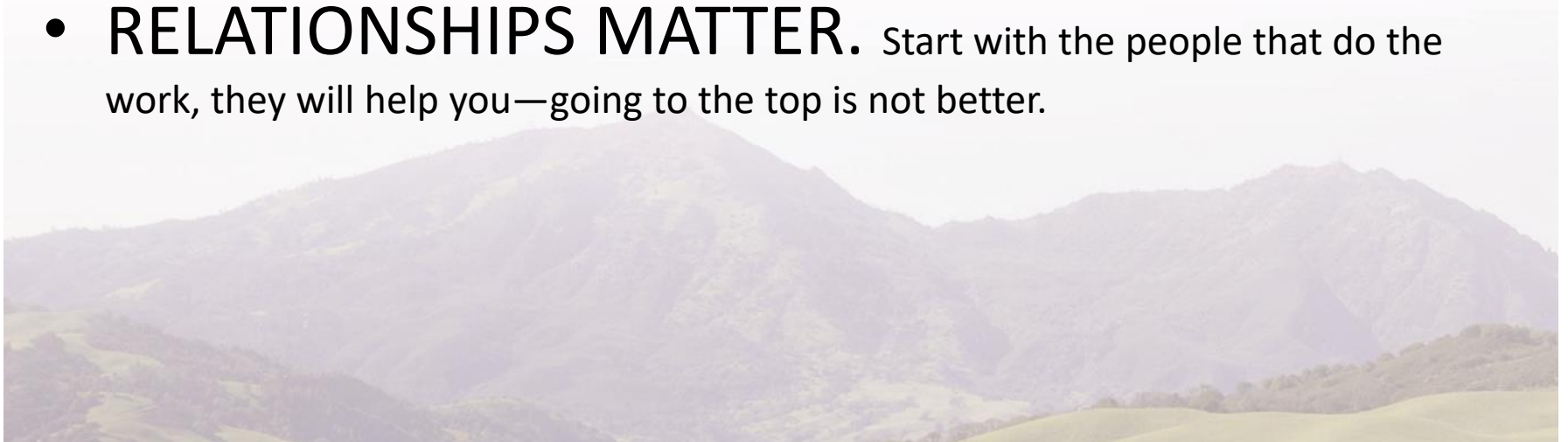
Tools

- Point of Care Tests- Use them
 - Hgb-UA-HbA1c-HIV- Urine Pregnancy-
 - Wish list:—I-Stat—UTOX--
- Diagnostic Imaging
 - Portable Ultrasound Machine
- Vouchers for labs
- Vouchers for transportation
- Partnerships
 - Relationships can not be over valued
 - Application expertise



Tips

- Be consistent and be available
- Keep it simple with treatment
 - Look at alternate treatment-ie: h-pylori
- Use free resources PAPS-foundations-
- Have a wish list for potential donors
- **RELATIONSHIPS MATTER.** Start with the people that do the work, they will help you—going to the top is not better.



RT

When it all works out in the end

- Undocumented
- No family
- Inherit distrust of system
- Medical and social issues
 - Homeless
 - Cerebral Palsy
 - Diabetes
 - Mental Health
- Connections
 - Regional Center
 - PHN
 - HCH
 - PRUCOL
 - Housing Board and Care



Questions, Concerns, Advise
What Else?

