



2013 National Health Care *for the Homeless*
**WEST COAST HEALTH &
HOUSING TRAINING**

Jointly sponsored by Vanderbilt University School of Medicine and
the National Health Care for the Homeless Council

SEPT 18 - 20, 2013 | IRVINE, CA



TABLE OF CONTENTS

Training Agenda	2
Intensive Trainings	4
Plenary Sessions	6
Workshop and Poster Descriptions	7
Site Tours	21
Welcoming Reception	22
Accreditation and Evaluation	23
Hotel Map	26

WEST COAST HEALTH & HOUSING TRAINING AGENDA

Wednesday, September 18

- 12 – 5 p.m. Registration Grand *Foyer B*
- 1 – 5 p.m. **Intensive Trainings**
- Health Care for the Homeless 101 *Salon A*
- Making the ACA Work for Clients and Communities *Salon B*
- Medical Respite Care *Trabuco*
- 2:30 – 3:00 p.m. Coffee Break Grand *Foyer B*

Thursday, September 19

- 8 a.m. – 3 p.m. Registration Grand *Foyer B*
- 8:30 – 10 a.m. Continental Breakfast Grand *Foyer B*
- 10 – 11:30 a.m. **Workshop Sessions**
- Motivational Interviewing *Salon A*
- The Dance: Integrated Outreach in Action *Salon B*
- Improving Quality in the Delivery of Care for Homeless Individuals *Trabuco*
- How To Be Your Own Health Advocate *Cabana Boardroom*
- 11:30 a.m. – 12:30 p.m. Lunch *Terrace Court*
- 12:30 – 1:30 p.m. Opening Plenary Session *Salon AB*
- 1:45 – 3:15 p.m. **Workshop Sessions**
- The Quantum Mechanics of Motivational Interviewing *Salon A*
- Using Individual Health Information to Make Decisions about Housing Resources and Population Health Information to Advocate for Systems Change *Salon B*
- LGBTQ Youth Competency and Adult Allyship *Trabuco*
- Spare Some Social Change *Cabana Boardroom*
- 3:15 – 3:45 p.m. Coffee Break Grand *Foyer B*

WEST COAST HEALTH & HOUSING TRAINING AGENDA

Thursday, September 19

3:45 – 5:15 p.m.

Workshop Sessions

Thrive: Self Care *Salon A*

Models of Workforce Development *Salon B*

Cultural Competence with Persons Involved with the Sex Trade *Tabuco*

Peer-to-Peer Learning for HCH Programs within
Local Health Departments *Cabana Boardroom*

6 p.m.

Welcoming Reception *Terrace Court*

Friday, September 20

8 a.m. – 2:30 p.m.

Registration Grand *Foyer B*

8 – 9 a.m.

Continental Breakfast Grand *Foyer B*

9:00 – 9:45 a.m.

Closing Plenary Session *Salon AB*

10 – 11:30 a.m.

Workshop Sessions

What Every Hospital Discharge Planner Needs to Know about
Homeless Patient Connections: Advanced Medical Respite Care *Salon B*

Integrating Sexual Health as a Vital Sign for Improved Patient
Health and Patient Engagement: A Focus on HIV *Tabuco*

Consumer Skill-Building: Strategies for Advancement *Cabana Boardroom*

11:30 a.m. – 12:30 p.m.

Luncheon & Roundtable Discussions *Terrace Court*

1 – 2:30 p.m.

Workshop Sessions

Integrating Care Management and Supportive Housing for
Chronically Homeless Frequent Users of Crisis Health Care Services *Salon A*

Consumer Involvement in ACA Education and Outreach *Salon B*

Integrating HIV Care into Primary Care *Tabuco*

A Conversation with Don McCanne *Cabana Boardroom*

INTENSIVE TRAININGS

WEDNESDAY, SEPTEMBER 18 | 1 – 5 P.M.

Health Care for the Homeless 101

In the mid-1980s, a group of clinicians and service providers demonstrated particular ways of providing health care to people experiencing homelessness. This delivery model, now known as health care for the homeless, helps alleviate suffering and support the recovery of people experiencing homelessness. It is a model of care that, while not taught in most health professions schools, has succeeded in the care for and recovery of people experiencing homelessness. Designed by HCH providers, this interactive course introduces students to the realities of homelessness, the HCH model of care, and the large community of HCH consumers, advocates, and providers.

Presenters: **Greg Morris, PA-C**; Program Director, Peak Vista Homeless Health Center; Colorado Springs, CO; **Deborah Borne, MD, MSW**; Medical Coordinator, Department of Public Health; San Francisco, CA

Room: Salon A

Making the ACA Work for Clients and Communities

The first part of this session will highlight lessons learned from different counties that have already participated in California's "Bridge to Reform" Medicaid program. After two years of outreach, 383,000 individuals have been enrolled according to an independent report delivered in May 2012. Participants of this intensive unit will explore outreach strategies, effective messaging in outreach and enrollment materials, suggested venues for outreach events, the enrollment process, barriers to enrollment and ways to improve it.

The second part of this session will address delivery of care and access to services. Change is already occurring in the delivery of care in Region IX. Topics will include waiting lists for services, provider take-up rate, changes in referral processes, and challenges in connecting clients to care. Providers will also discuss quality of care and the ongoing challenges facing clinical care.

Presenters: **Barbara DiPietro, PhD**; Director of Policy, National Health Care for the Homeless Council; Baltimore, MD; **Kandis Driscoll, BS**; Workgroup Director, Insure the Uninsured Project; Santa Monica, CA; **Mark Refowitz, DC, DMH, MHMA**; Director, Orange County Health Care Agency; Santa Ana, CA; **Aracely Navarro**, Policy Coordinator, California Primary Care Association; Sacramento, CA; **Beth Malinowski**, Associate Director of Policy, California Primary Care Association, Sacramento, CA; **David Dickinson, MA**; Regional Administrator, SAMHSA HHS Region X, Seattle, WA

Room: Salon B

INTENSIVE TRAININGS

WEDNESDAY, SEPTEMBER 18 | 1 – 5 P.M.

Medical Respite Care

Medical respite programs provide acute and post-acute medical care for homeless persons who are too ill or frail to recover from a physical illness or injury on the streets but are not ill enough to remain in a hospital. Medical respite programs are increasingly being integrated into health reform efforts aimed at improving quality of care for vulnerable populations while reducing costs related to avoidable and frequent hospital utilization. This workshop will provide an overview of medical respite care, the evidence base supporting medical respite programs, and programmatic and clinical structures that help improve continuity of care, increase self-management, and reduce system-wide health care costs. Attendees will also have an opportunity to talk to clinicians and administrators engaged in two different medical respite program models. Faculty from the Los Angeles-based JWCH Institute Recuperative Care Program and the Seattle-based Edward Thomas House will describe the ins and outs of their program designs and the impacts these programs have had on patient health and community costs.

Presenters: **Paul Leon, RN, PHN**; Chief Executive Officer, Illumination Foundation; Irvine, CA; Willie Mackey, Regional Representative, National Consumer Advisory Board; Palo Alto, CA; **Leslie Enzian, MD**; Medical Director, Edward Thomas Medical Respite; Seattle, WA; **Al Ballesteros, MBA**; Chief Executive Officer, John Wesley Community Health Institute, Inc.; Los Angeles, CA; **Paul Gregerson, MD, MBA**; Chief Medical Officer, John Wesley Community Health Institute, Inc.; Los Angeles, CA

Room: Trabuco

PLENARY SESSIONS

THURSDAY, SEPTEMBER 19, 2013 | 12:30 – 1:30 P.M.

The Value of Health Workers in Communities of Vulnerable People

This special presentation will feature an overview of the Centers for Medicare and Medicaid Innovation (CMMI) Cooperative Agreement awarded to the National Health Care for the Homeless Council in June 2012. Darlene Jenkins will discuss the National HCH Council's current collaboration with 12 health center grantees and 16 newly hired and trained community health workers (CHWs) to connect unstably housed individuals who are high users of the emergency department for non-emergent care into primary care and other health services.

Presenter: **Darlene Jenkins, DrPH**; Director of Research and Evaluation, National Health Care for the Homeless Council; Nashville, Tennessee

Additional remarks by **Paul Leon**; **Julie Miller-Phipps**, Senior Vice President and Executive Director, Kaiser Permanente Orange County; **John Lozier**, Executive Director, National Health Care for the Homeless Council; and other Orange County-area partners and supporters

G.G. Greenhouse Award

The award is given annually by Region IX HCH members to the person nominated who best exemplifies the spirit of leadership, camaraderie, initiative, commitment, innovativeness, and human kindness. These characteristics were visibly demonstrated by GG Greenhouse who put these values into practice as the Director of Alameda County Health Care for the Homeless Program from 1988 to 2011. The planning committee is pleased to be able to annually recognize other outstanding individuals in the HCH field who exhibit these same qualities.

Recipient: **Molly Kennedy**

Room: Salon AB

FRIDAY, SEPTEMBER 20, 2013 | 9:00 – 9:45 A.M.

My Journey from Homelessness (in Two States)

Presenter: **Marion Walls**

Additional remarks by **John Lozier**; **Julie Puentes**, Regional Vice President, Orange County, Hospital Association of Southern California; and other Orange County-area partners and supporters

Room: Salon AB

WORKSHOPS

THURSDAY, SEPTEMBER 19, 2013 | 9 – 10:30 A.M.

Motivational Interviewing

Whether you are looking for a refresher or new to motivational interviewing (MI), this workshop is for you! Regardless of your role, MI provides strategies and skills to assist clients and patients through the change process and towards better health and well-being. This workshop will provide an introduction to key concepts and the spirit of MI while teaching you some skills that you can put to use right away.

Presenter: **Matt Bennett, MBA, MA;** Partner, Diverse Management Solutions; Denver, CO

Room: Salon A

The Dance: Integrated Street Outreach in Action

Successfully connecting people experiencing homelessness to resources can be a delicate dance for outreach staff. In Orange County, the Health Care Agency (health department) has teams that provide outreach and engagement services using different funding streams, disciplines, and skills. The members of these units collaborate closely in the field to ensure seamless service delivery using evidence-based practices, and this teamwork is a key to their success. Public health nurses, mental health clinicians, addiction specialists, case managers, an insurance specialist, and paraprofessionals provide interdisciplinary services to those who are not engaging with available resources. This session will demonstrate how the three units work together to link clients to insurance, medical homes, mental health care, recovery services, and basic needs resources using rapport-building and warm handoffs. Clients are also provided assistance in developing coping skills, achieving goals, managing their chronic medical conditions, and addressing barriers to stability and quality of life. Referrals are accepted from anyone in the community who has concerns about an individual who is homeless or at risk of homelessness.

Presenters: **Larry Pritchett, RN, BSN;** Public Health Nurse, Comprehensive Health Assessment Team—Homeless, Public Health Nursing; **Robin Keeble, MPH;** Program Supervisor I, Risk Reduction Education and Community Health, Behavioral Health Services; **Hector Varela, MHS, CATC;** Mental Health Specialist, Outreach & Engagement, Behavioral Health Services; **Elizabeth Page Brockwell, LCSW;** Clinical Social Worker, Outreach & Engagement, Behavioral Health Services; **Becky Stone, RN, BSN;** Supervising Public Health Nurse, Comprehensive Health Assessment Team—Homeless, Public Health Nursing; Orange County Health Care Agency, Orange, CA

Room: Salon B

WORKSHOPS

THURSDAY, SEPTEMBER 19, 2013 | 9 – 10:30 A.M.

Improving Quality in the Delivery of Care for Homeless Individuals

Quality improvement efforts are an important component of health care reform efforts. Much attention is now being placed on value-based health care with enhanced quality and lower costs. Health care for the homeless programs must improve their quality metrics in the face of the many obstacles to care that patients face. Improved chronic disease management and preventive health screening remain of paramount concern, yet the challenges of achieving these remain high.

A lecture and facilitated breakout sessions will discuss the current approach to improving chronic disease management and preventive health maintenance. Discussion will then focus on applying what works best and overcoming the barriers to care. Workshop attendees will understand different approaches to assessing quality of health care, and will be aware of examples of structure, process, and outcome measures of quality care.

Presenter: **Deborah Borne, MD, MSW**; Medical Coordinator, Department of Public Health; San Francisco, CA

Room: Trabuco

How to Be Your Own Health Advocate

Good health depends on more than a good doctor—patients themselves must be involved. This workshop will provide techniques for individuals who have experienced homelessness to become their own health advocates. Understanding personal health needs, having a good relationship with medical providers, and being educated on health maintenance will lead to positive health outcomes. Beginning with self-advocacy, some HCH consumers have gone beyond to become advocates for better health care policies in their communities. This workshop will explain how.

Presenters: **Molly Kennedy**; MPA, Self-Advocate Representative, Area Board 13, California State Council on Developmental Disabilities; **Terrye Sukari Finley**, Consumer Board Member, Los Angeles Christian Health Centers; Los Angeles, CA; **Brian Zralek, MSSW**; Consumer Advocate, National Health Care for the Homeless Council; Nashville, TN

Room: Cabana Boardroom

WORKSHOPS

THURSDAY, SEPTEMBER 19, 2013 | 1:45 – 3:15 P.M.

The Quantum Mechanics of Motivational Interviewing

That's right, welcome to what may be the strangest (and hopefully most exciting) workshop you will ever attend! The quantum reality is one of astonishment and wonder, yet it holds the answer to the question "why?" Why do interventions like motivational interviewing, solution-focused therapy, and mindfulness work? One cannot answer this question without examining the quantum nature of consciousness and how it affects our neurological functioning. This workshop will look at the power of the mind and how you can position interventions to have an impact on your clients and patients. Come for the practical applications and stay for a whole new conception of the universe!

Presenter: **Matt Bennett, MBA, MA;** Partner, Diverse Management Solutions; Denver, CO

Room: Salon A

WORKSHOPS

THURSDAY, SEPTEMBER 19, 2013 | 1:45 – 3:15 P.M.

Using Individual Health Information to Make Decisions about Housing Resources and Population Health Information to Advocate for Systems Change

Adequate shelter and housing are proven in the research to be crucial interventions for acquiring and maintaining health and wellness for individuals. Yet, in many communities across America, people believe insufficient resources exist to house everyone who is experiencing homelessness. Several tools have been designed to use individual health information to make decisions about allocating scarce housing resources and to support advocacy efforts for additional housing resources.

The 100,000 Homes Campaign is a national movement of communities working together to find permanent homes for 100,000 of the most vulnerable homeless Americans by July of 2014. It provides training and free database scoring access to over 200 communities on the use of its Vulnerability Index. Through a partnership with Org Code, the Campaign is in the midst of spreading its newest assessment tool that incorporates additional research, the Vulnerability Index Service Prioritization Decision Assistance Tool. Some communities like Fort Worth have refined the Vulnerability Index based on local research. So far, more than 200 communities have joined the Campaign, and they've permanently housed over 65,000 people.

In this session, we will present out on the assessment tools used by the 100,000 Homes Campaign including an in-depth look at how communities can do their own research to further refine these assessment tools. We will discuss how these tools are being used to allocate scarce resources, and most importantly how they can be used to advocate fiercely - and effectively - for additional resources.

Presenters: **Becky Kanis, MS**; Director, 100,000 Homes Campaign; Los Angeles, CA; **Courtney Cronley, PhD, MSSW**; University of Texas, Arlington, TX

Room: Salon B

WORKSHOPS

THURSDAY, SEPTEMBER 19, 2013 | 1:45 – 3:15 P.M.

LGBTQ Youth Competency and Adult Allyship

This interactive workshop provides participants with an introduction to terminology and cultural context related to LGBTQ young people. The workshop introduces best practices for providing affirming services to LGBTQ youth and addresses effective ways to create safe spaces for queer youth within a variety of environments. Additionally, attendees will discuss the ways in which institutional and interpersonal violence affects LGBTQ young people and will explore ways in which adults can serve as allies to queer youth.

Presenter: **Cassandra Avenatti, MSW;** Founder, Project Fierce; Executive Board Member, Sex Workers Outreach Project; Chicago, IL

Room: Trabuco

Spare Some Social Change

Health care for the homeless staff and consumers possess significant experience with the successes and failures of the homeless services system. This expertise is invaluable in the struggle to improve the public policies that can ultimately prevent and end homelessness. This workshop will explain the connection between public policy and homelessness and will explore strategies to integrate direct service and policy advocacy at the project level. Overcoming barriers to policy advocacy, specific action steps to encourage the integration of service and advocacy, and strategies for successful advocacy campaigns will all be discussed. Examples of successful advocacy efforts will be provided, including preparing staff and consumers to provide testimony, organizing mass action, and the importance of broad participation in advocacy.

Presenter: **Dan Rabbitt, MSW;** Health Policy Organizer, National Health Care for the Homeless Council; Baltimore, MD

Room: Cabana Boardroom

WORKSHOPS

THURSDAY, SEPTEMBER 19, 2013 | 3:45 – 5:15 P.M.

Thrive: Self Care

As helping professionals we are at risk of experiencing issues that mirror those of the traumatized clients we serve. Research demonstrates the dangerous impact the exposure to trauma can have on physical and emotional health when it is combined with a stressful work environment. Knowledge is the best defense against burnout, vicarious trauma, and compassion fatigue. This workshop goes further than other self-care trainings by addressing the critical elements of health to enhance productivity and quality of work. Utilizing research in neurobiology, psychology, and business, this training provides skills for those in direct care to be more effective and efficient at work, allowing for the highest level of services possible.

Presenter: **Matt Bennett, MBA, MA;** Partner, Diverse Management Solutions; Denver, CO

Room: Salon A

Models of Workforce Development

This workshop provides a practical model designed to maximize clinical and organizational outcomes while enhancing the overall health of your workforce. Working with homeless populations has many challenges that can dramatically decrease the health and productivity of staff. This workshop combines strategies to overcome these challenges while giving the participant concrete concepts to improve the performance of staff. Based on the most recent research in business, science, and performance management, this powerful approach provides strategies that can transform programs and organizations. Whether you are an aspiring or experienced leader, you'll see your role and work in a whole new light.

Presenter: **Robert Coleman, MBA;** Executive Director, Second Chance Program; San Diego, CA

Room: Salon B

WORKSHOPS

THURSDAY, SEPTEMBER 19, 2013 | 3:45 – 5:15 P.M.

Cultural Competence with Persons Involved with the Sex Trade

This interactive workshop provides an overview of theories of sex work and introduces helping professionals to best practices for engaging in work with individuals involved in the sex trade. The workshop will present the language and terminology related to sex work and discuss the crucial differences between trafficking and consensual adult sex work. The workshop also explores recommended practices for communicating with sex workers in the field and in clinical settings while addressing current legislation that affects sex industry workers.

Presenter: **Cassandra Avenatti, MSW;** Founder, Project Fierce; Executive Board Member, Sex Workers Outreach Project; Chicago, IL

Room: Trabuco

Peer-to-Peer Learning for HCH Programs within Local Health Departments

This 90-minute session will feature Q & A with representatives from local public entity health care for the homeless grantees. Participants will learn from one another through an informal discussion of their unique challenges, such as governance and funding requirements. The group will also discuss future initiatives and upcoming technical assistance and training opportunities.

Room: Cabana Boardroom

WORKSHOPS

FRIDAY, SEPTEMBER 20, 2013 | 10 – 11:30 A.M.

What Every Hospital Discharge Planner Needs to Know about Homeless Patient Connections: Advanced Medical Respite Care

Recuperative (aka medical respite) care reduces millions in health care costs and provides continuing health care benefits to people experiencing homelessness who are discharged from hospitals. This workshop will present an overview of a social model of medical respite care and the lessons learned from the Recuperative Care Centers of Orange County and Los Angeles. This presentation will identify the various challenges in homeless care transition and medical, social, and mental health resource connections and offer insights toward improving quality of care and outcomes. In addition, promising practices for addressing transitional care for people who lack housing and have a disability will be discussed.

Presenters: **Aiko Tan, MBA**; Executive Director of Health Care Services; **Jocelyn Escobar, MHA**; Manager of Health Care Services, Social Worker, Illumination Foundation; Irvine, CA; **Elizabeth Yang, MSW**; Director of the Recuperative Care Program, National Health Foundation; Los Angeles, CA; **Norma Legarreta**, Title II Technical Expert for the Fountain Valley District Office, Social Security Administration; Santa Fe Springs, CA

Room: Salon B

WORKSHOPS

FRIDAY, SEPTEMBER 20, 2013 | 10 – 11:30 A.M.

Integrating Sexual Health as a Vital Sign for Improved Patient Health and Patient Engagement: A Focus on HIV

Learning about the sexual health and behavior of all adolescent and adult patients reflects a commitment to both patient-centered care and community health. A routine sexual health history provides the opportunity to talk with patients about diseases such as HIV, sexually transmitted diseases (STDs), and viral hepatitis, diseases that can go unnoticed for long periods of time until they lead to more serious illness. Without treatment, they can also spread to sexual partners and increase disease in the community. As a key primary care provider in the United States, health centers play a critical role in the national response to the HIV, hepatitis C, and STD epidemics and in improving the lives of impacted individuals. Partnerships between health centers and public health agencies support a seamless system of screening, treating, and caring for health center patients affected by HIV and other STDs.

This session introduces sexual health as a framework for primary care and public health partnerships and addressing HIV, Hepatitis C and STDs in the primary care setting.

Presenters: **Evette Patterson, BSN**; Director of Clinical Services, Piedmont Health Services; Chapel Hill, NC; **Denise Lewis, MSN, MS, NP**; Medical Specialist, California Family Health Council, Berkeley, CA

Room: Trabuco

Consumer Skill-Building: Strategies for Advancement

The National Consumer Advisory Board offers this workshop to develop job and life skills through participation in NCAB and National Health Care for the Homeless Council activities as well as through work on local consumer advisory boards. Examples of these activities include the basics of survey research, presentation development and delivery, meeting organization, and strategic storytelling. Presenters will offer these ideas and open the workshop for dialogue on other skills and opportunities for personal and professional advancement.

Presenters: **Brian Zralek, MSSW**; Consumer Advocate, National Health Care for the Homeless Council; Nashville, TN; **Willie Mackey**, Board Member, National Health Care for the Homeless Council, Oakland, CA

Room: Cabana Boardroom

WORKSHOPS

FRIDAY, SEPTEMBER 20, 2013 | 1 – 2:30 P.M.

Integrating Care Management and Supportive Housing for Chronically Homeless Frequent Users of Crisis Health Care Services

Health reform is transforming how health care is delivered, offering potential opportunities to fund services in supportive housing. Health systems are also beginning to evolve to recognize housing as an integral component of health care. In the process, new models are emerging in providing housing-based services. This workshop will focus on how innovative partnerships and tools, along with changes in health care systems, are leading to advances in how supportive housing and services providers think about, fund, and provide services to people experiencing chronic homelessness. Our experience shows that linking care management to supportive housing for this population improves health outcomes and reduces health care costs.

In Los Angeles County, CSH is working with the Economic Roundtable and a diverse network of 15 hospitals, five health centers, and nine homeless service providers to collaborate to improve health outcomes for 200 of the county's most high-need, chronically homeless frequent users of hospitals. In San Francisco, CSH is funding the Tenderloin Neighborhood Development Corporation to provide 172 supportive housing units to homeless frequent users of health care services in a newly rehabilitated former YMCA building with a ground floor health center. TNDC is partnering with the SF Department of Public Health's Housing and Urban Health and the SF Health Plan.

Presenters: **Steven Shum, MCP**; Senior Program Manager, CSH; Oakland, CA; **Susan Lee, MBA**; Senior Program Manager, CSH; Los Angeles, CA; **Daniel Flaming, PhD, ED**; President, Economic Roundtable; Los Angeles, CA; **Jonathan Lopez**, Homeless Navigator, Kaiser Permanente Woodland Hills; San Francisco, CA; **Corrin Buchanan, MPH**; Project Manager of Housing and Urban Health, Department of Public Health; San Francisco, CA

Room: Salon A

WORKSHOPS

FRIDAY, SEPTEMBER 20, 2013 | 1 – 2:30 P.M.

Consumer Involvement in ACA Education and Outreach

The Affordable Care Act represents a tremendous opportunity to improve the health and financial stability of our communities but also poses significant challenges. Reaching out and educating the public about the benefits of the law is among the largest challenges, and this is even more pronounced for individuals experiencing homelessness. Consumer advisory boards and other consumer groups have the potential to be a significant part of community level education and outreach efforts. This workshop will go over guidelines and best practices in developing educational strategies and provide case examples from consumers involved in ACA education and outreach in Northern California.

Presenters: **Dan Rabbitt, MSW**; Health Policy Organizer, National Health Care for the Homeless Council; Baltimore, MD; **Samuel Weeks, DDS**; Consumer Advocate, Alameda County HCH Program; Oakland, CA

Room: Salon B

Integrating HIV Care into Primary Care

Integrating HIV care into non-HIV specific clinics requires that these facilities become familiar with the National AIDS Strategy that was issued by the Obama Administration in 2010. This document serves as a blueprint for our national response to the domestic epidemic (www.aids.gov National AIDS Strategy). According to the Affordable Care Act (ACA) preventative services are to be streamlined into primary care without out-of-pocket costs. These services include HIV/STD screening and other services.

HIV is a specialized chronic illness that can be managed with infectious disease clinicians and case managers who can provide access to supportive services like the AIDS Drug Assistance Program, food pantries, transportation and child care.

Faculty: **Precious Jackson**, BTAN, Women's Health Program Coordinator, Center for Health Justice, Los Angeles, CA

Room: Trabuco

WORKSHOPS

FRIDAY, SEPTEMBER 20, 2013 | 1 – 2:30 P.M.

A Conversation with Don McCanne

Don McCanne, MD, is a preeminent national advocate for single payer health care. Dr. McCanne posts the widely read “Quote of the Day,” commenting on news items and health policy developments from the single payer perspective. Join Dr. McCanne and senior leadership of the National HCH Council for an intimate and wide-ranging discussion on the advantages of and prospects for universal health care.

Discussants: **Don McCanne, MD**; Past President and current Senior Health Policy Fellow, Physicians for a National Health Plan; Orange County, CA; **John Lozier, MSSW**; Executive Director, National Health Care for the Homeless Council; Nashville, TN; **Barbara DiPietro, PhD**; Policy Director, National Health Care for the Homeless Council; Baltimore, MD

Room: Cabana Boardroom

POSTERS

Posters will be on display for the duration of the training. Students will be available to discuss their work with participants on Thursday, September 19, 9 – 9:30 a.m. and 3:15 – 3:45 p.m. and on Friday, September 20, 9 – 9:30 a.m. and 12:30 – 1p.m.

The Cost of Caring: Effects of Compassion Fatigue among Emergency Department Staff

Presenter: **Karen E. Mitchell, RN, MSN, CMCN, CNE**

In Collaboration with **Catherina Madani, RN, MSN, CHPN**; University of California San Diego Health System

African Americans and Their Perspectives on Promoting Colorectal Cancer Screenings in the Church: A Close Examination of How Women Church Leaders View Religiously Targeted CRC Messages

Presenter: **Crystalee C. Masarik, KU McNair Scholar**

In Collaboration with **Crystal Y. Lumpkins, PhD**; Family Medicine Research Division, The University of Kansas Medical Center

Evaluating a Homeless Outreach Partnership Effort Team in Orange County, Florida

Presenter: **Karla Ruiz, MPH, BS, BA**; William Carey University College of Osteopathic Medicine

Access and Utilization of Health Care among Homeless Patients in Central Florida

Presenters: **Jordy Gordinez, BS** (expected May 2014); **Aaron Simonett**

In Collaboration with **Pia Valvassori ARNP, PhD**; **Gavin Putzer MD, PhD, MPH**; University of Central Florida

Recommendations for Preventing and Controlling Tuberculosis among Orange County's Homeless

Presenter: **Monique Halabi, MPH**; University of California Irvine

Housing Instability and Birth Weight among Young Urban Mothers

Presenter: **Bianca Carrion, CDE**; Social & Behavioral Sciences

In Collaboration with **Jeannette R. Ickovics, PhD**; **Trace Kershaw, PhD**; Yale School of Public Health

POSTERS

Family Safe Zone: St. Christopher's Hospital for Children

Presenter: Jill Hersh, MA; Immaculata University

Developing and Implementing an Effective Reproductive Health Education Program

Presenter: Omeid Heidari, BSN, RN; University of California Irvine

In Collaboration with Cassidie Thomas, BSN, RN, Julie Rousseau, PhD, RN, CNM; Clinical Professor, University of California Irvine

We are grateful for the support of Wells Fargo and Kaiser Permanente to provide travel and accommodations to our student poster presenters.

SITE TOURS

Sign up at the registration table and visit two health center sites delivering care to vulnerable populations in Orange County and expanding into the Los Angeles area.

Illumination Foundation

Illumination Foundation, an Orange County-based 501(c)(3) nonprofit provides health care, housing, recuperative care, and workforce development services to the community through their mobile medical and motel families outreach programs. To date, Illumination Foundation's housing programs have served 1,183 families and placed 520 families into permanent housing. Illumination Foundation's medical programs have provided medical and social services to 8,718 patients.

Share Our Selves

Share Our Selves (SOS) is a nationally recognized health center providing high quality, comprehensive safety net services to the Orange County community. A patient-centered medical home with homeless outreach and care services, SOS also distributes 44,000 bags of food annually through the SOS Food Pantry. In 2011, they conducted 5,324 financial aid visits and 25,276 medical/ dental visits. 2,556 children received backpacks and school supplies through the Back to School Program and 4,954 children received gifts and food through the Adopt A Family Program.

Site tours are limited in some cases and may require more than 30 minutes including travel time.

Thursday, September 19

11:30 a.m.

3:15 p.m.

Friday, September 20

11:30 a.m.

WELCOMING RECEPTION

Join the faculty and staff of the National Health Care for the Homeless Council for a welcoming reception at the end of the first full day of training. Relax by the pool with other conference attendees and advocates from across California and the United States.

Where: Terrace Court

When: Thursday, September 19, at 6 p.m.

ACCREDITATION AND EVALUATIONS

Evaluations

Paper evaluations will be administered on site by Council staff.

Objectives

After participating in this CME activity, participants should be able to describe and discuss the unique elements of the HCH approach to patient care;

examples from the HCH community of efforts to maintain clinical quality, consumer participation, and interdisciplinary approaches in clinical care; and

the systematic realities of barriers to care and methods to remove those barriers at clinic and community levels.

Faculty Disclosure

It is the policy of Vanderbilt University School of Medicine and the National Health Care for the Homeless Council to require disclosure of financial relationships from individuals in a position to control the content of a CME activity; to identify and resolve conflicts of interest related to those relationships; and to make disclosure information available to the audience prior to the CME activity. Presenters are required to disclose discussions of unlabeled/unapproved uses of drugs or devices during their presentations.

All course directors, planners, and speakers indicated no financial relationships to disclose.

Accreditation

This activity has been planned and implemented in accordance with the Essential Areas and Policies of the Accreditation Council for Continuing Medical Education through the joint sponsorship of Vanderbilt University School of Medicine and the National Health Care for the Homeless Council. Vanderbilt University School of Medicine is accredited by the ACCME to provide continuing medical education for physicians.

ACCREDITATION AND EVALUATIONS

Designation of Credit

Vanderbilt University School of Medicine designates this live activity for a maximum of *12.5 AMA PRA Category 1 Credit(s)*[™]. Physicians should claim only the credit commensurate with the extent of their participation in the activity.

To obtain credit for your participation in today's activity, complete the credit claim form at <https://www.surveymonkey.com/s/westcoast2013> by September 30, 2013.

You will receive email notification of online credit availability 1-2 weeks after data is submitted to Vanderbilt CME.

You may access your record of participation at anytime by visiting the Division of CME web-site at www.cme.vanderbilt.edu and following the instructions to obtain a transcript.

CMEs are typically applicable and transferable for a variety of health professions, including nursing, social work, and alcohol and drug counseling. Please check with your credentialing body to verify.

Commercial Support

This educational activity received no commercial support.

Exhibits

The sponsors express appreciation to the following companies for their support of this educational activity by providing exhibit fees:

Corporation for Supportive Housing

HCH Clinicians' Network

HCH Policy Committee

HCH Practice-Based Research Network

National Consumer Advisory Board

Join these Region IX organizations and become a member organization of the National Health Care for the Homeless Council. Receive access to our online and live learning events, technical assistance and important federal policy briefs.

Arizona

Maricopa County Department of Public Health, Phoenix

California

Share Our Selves, Costa Mesa

Saffron Strand, Inc., El Cerrito

Homeless Health Care Los Angeles

John Wesley Community Health Institute, Inc., Los Angeles

Contra Costa Health Services, Martinez

Alameda County Health Care for the Homeless Program, Oakland

Center of the Vulnerable Child at Children's Hospital and Research Center, Oakland

Shasta Community Health Center-Project HOPE, Redding

Urban Community Action Projects Homeless Health Care, Riverside

Sacramento County Health Care for the Homeless Program, Sacramento

Family Health Centers of San Diego

Northeast Valley Health Corporation, San Fernando

San Francisco Community Clinic Consortium, San Francisco

Tom Waddell Health Center, San Francisco

San Mateo Medical Center Health Care for the Homeless Program, San Mateo

Santa Barbara County Public Health Department, Santa Barbara

Santa Cruz County Homeless Persons Health Project, Santa Cruz

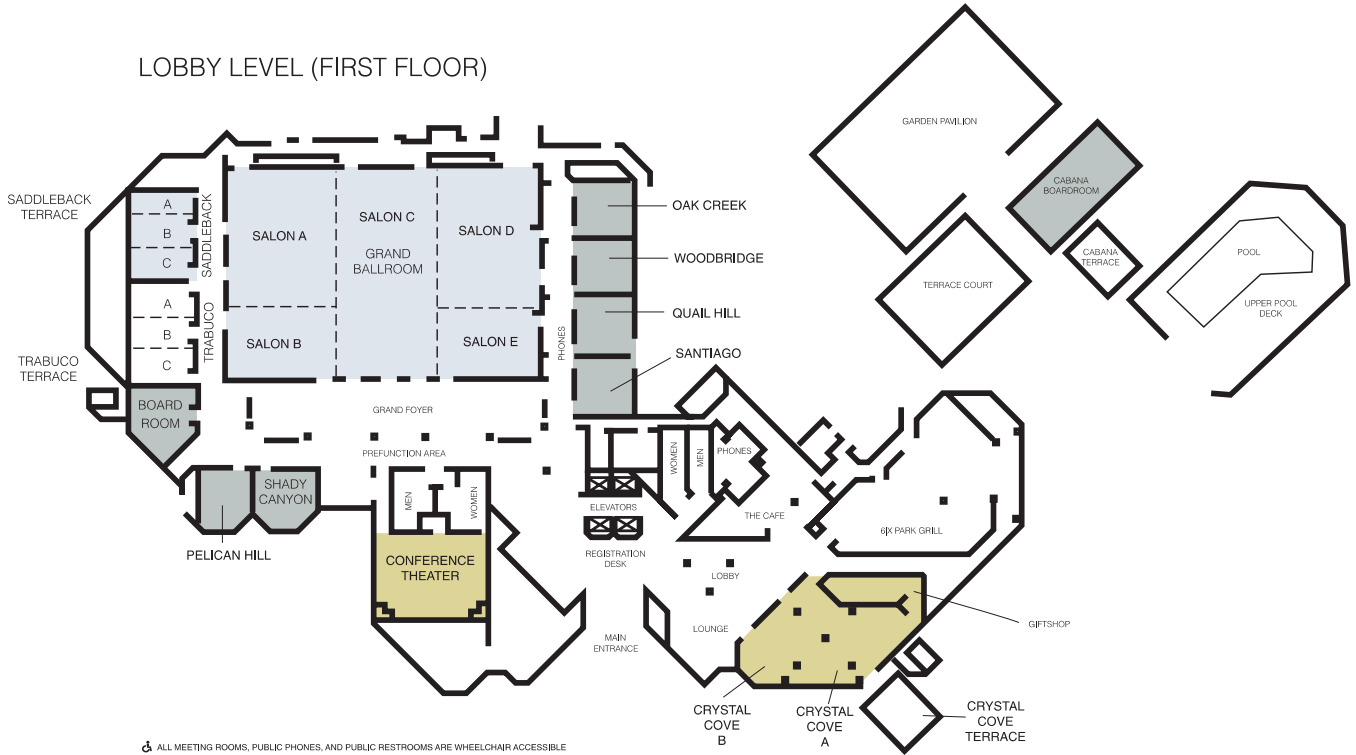
CARE LINK – Community Medical Centers, Inc., Stockton

Venice Family Clinic, Venice

Contact Wade Munday, wmunday@nhchc.org for more information or sign up at www.nhchc.org/join

HOTEL LAYOUT

LOBBY LEVEL (FIRST FLOOR)









NATIONAL
HEALTH CARE
for the
HOMELESS
COUNCIL

www.nhchc.org

This program is supported by grant number NCA U30CS09746 from the Health Resources and Services Administration, Bureau of Primary Health Care. All contents are solely the responsibility of the authors and do not necessarily represent the official views of HRSA.