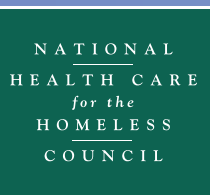
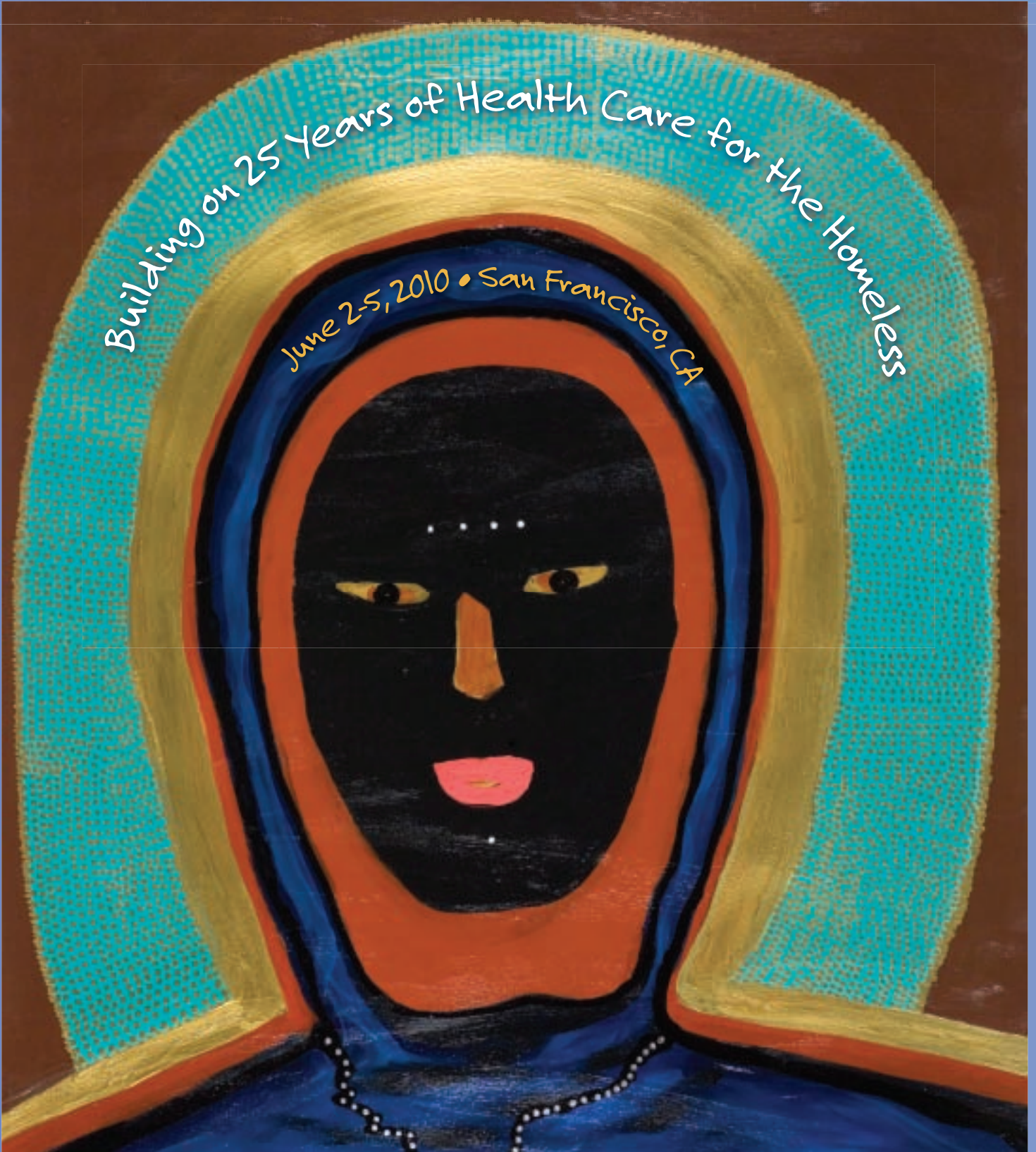


INNOVATIVE APPROACHES

Building on 25 Years of Health Care for the Homeless
June 2-5, 2010 • San Francisco, CA



Jointly sponsored by Vanderbilt School of Medicine
and the National Health Care
for the Homeless Council

TABLE OF CONTENTS

Welcome.....	1
Conference Schedule	2-4
Opening Plenary	5
Friday Plenary.....	6
Highlights	7
Welcoming Reception	7
Rally for Human Rights	7
Continuing Education and Barcode Attendance Tracking	7
Plenary and Workshop Webcasts	7
Informal Networking Lunches	7
HCH Clinicians' Network Annual Membership Meeting.....	7
Topical Roundtable Discussions	7
Specialty Networking	8
Site Tours	8
Resource Room	8
Poster Displays	8
Consumer Mentors	8
Evening Film Showings	8
Art From the Streets	9
12-Step Meetings.....	9
Business Meetings	9
Planning for 2011 Conference	9
Pre-Conference Institutes	10
Workshop Descriptions	11-23
Poster Displays	24
Roundtable Discussion Topics	25
Resource Room Exhibitors.....	25
Conference Accreditation	26
Online Learning Opportunities.....	26
Join the National Council	26
Conference Planning Committee	27
National HCH Council Board and Staff	27
Hotel Maps	28-29
About the National Health Care for the Homeless Council.....	Back Cover

Photographers and videographers are on-site. Please notify a staff person at the registration table if you do not wish to have your image recorded at these public events.

Cover Artwork

© Howard Cook | Image courtesy of *Art From the Streets*. Photographer: Scott Van Osdol

Conference materials designed by M Group, www.mgroupamerica.com

This program is supported in part by a grant from the Health Resources and Services Administration (HRSA) to provide training and technical assistance to Health Center grantees. The content does not necessarily represent the views of HRSA or the federal government.

WELCOME TO THE 2010

National Health Care for the Homeless Conference & Policy Symposium

We've been at this for 25 years now.

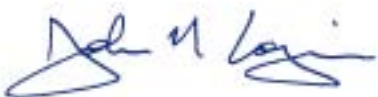
The National Health Care for the Homeless Council, and the much larger movement that we represent, began with the thought that we could work ourselves out of business, that the sudden emergence of mass homelessness of the early 1980's was an aberration from the American norm. But we failed to break the back of homelessness. Today, unemployment hovers around 10%, 46 million of our neighbors still don't have health insurance, the housing crisis has spread from the poor to the middle class, the shelters are overflowing, and homelessness is on a rapid rise everywhere.

Because the nation needs us, Health Care for the Homeless is about to experience challenging, unprecedented growth. The national health care reform includes a 50% increase in Health Center funding next year (one billion new dollars, 8.7% of it for HCH), and billions more in subsequent years. Four years from now, virtually all of our clients will become Medicaid eligible. Our continuing responsibility will be to reach those on the farthest margins of society, to ensure that the benefits of reform reach them.

Our greatest challenge as we grow will be retaining what we have been. We have defined ourselves as partisans for human rights, struggling in our time and place for implementation of the fundamental rights to health care and housing. We have built outreach-oriented, multi-disciplinary, integrated systems of care that are sensitive and responsive to the complicated health situations of people without homes. We have learned from and advocated with each other, and have built a committed, inclusive community.

This conference is about all of that. It is made possible through a Cooperative Agreement with the Health Resources and Services Administration, through the sponsorship of Vanderbilt School of Medicine, through the strenuous efforts of the Planning Committee and Council staff, but most importantly through the willingness of the HCH constituency — you — to freely share your knowledge and passion with each other.

Welcome. Thank you for being part of this work.



John Lozier, MSSW

Executive Director, National Health Care for the Homeless Council

CONFERENCE SCHEDULE

Wednesday, June 2

- 7:00 - 8:30 am Registration *Golden Gate Foyer*
7:00 - 8:15 am Breakfast *Golden Gate C*
8:30 am - 4:30 pm Pre-Conference Institutes
Health Care for the Homeless: Advanced Clinical Topics *Golden Gate A*
Creating Healthy Organizations: Innovative Leadership in Homeless Services *Sierra I*
Conducting Practice-Based Health Care for the Homeless Research *Sierra H*
Medical Respite Care Everywhere *Golden Gate B*
Walking the Talk: Integrating Consumers Into the Delivery of Homeless Services *Sierra K*
3:00 - 6:00 pm Registration *Golden Gate Foyer*
4:30 - 6:30 pm Respite Care Providers' Network Membership Meeting *Golden Gate B*
6:30 - 8:30 pm National Consumer Advisory Board Membership Meeting *Golden Gate A*

Thursday, June 3

- 7:00 - 8:00 am 12-Step Meeting *Sierra K*
7:30 am - 5:30 pm Registration *South Registration*
7:30 am - 5:30 pm Resource Room Open *Golden Gate C*
7:30 - 8:30 am Breakfast | Roundtable Discussions *Yerba Buena 9*
8:30 - 10:00 am Opening Plenary *Yerba Buena 9*
Ellen Dailey Consumer Advocate Award
Susan L. Neibacher Address: James O'Connell, MD
10:00 - 10:30 am Break | Poster Presentations *Golden Gate C*
10:30 - 12:00 noon Workshops
Safe Transitions: Improving Discharges from Hospital to Respite and From Respite to the Community *Yerba Buena 10-11*
Providing Comprehensive Health Care to Patients Who Inject Drugs *Yerba Buena 12-13*
Homelessness and Traumatic Stress *Yerba Buena 14-15*
The Intersections of Homelessness and Domestic and Sexual Violence *Golden Gate A*
Consumer Advisory Boards (CABs) *Golden Gate B*
Differences Between Self-Reported and Actual Conditions Associated with a High Mortality Risk: Updates on the Vulnerability Index *Pacific H*
A Collaborative Approach to Providing Pediatric Care for Homeless Families *Pacific I*
Strategic Planning for HCH Projects *Pacific J*
What Are the Implications of Medical Home and Meaningful Use? *Sierra I*
12:15 - 1:30 pm Luncheon *Yerba Buena 9*
1:45 - 2:45 pm Workshops
A Billing Room With a View: Developing the Delicate Dance of Checkout With a Supportive Stance *Yerba Buena 10-11*
Advocacy Strategies to Protect State Disability Programs *Yerba Buena 12-13*
Medical Respite and the Continuum of Care: Housing Options *Yerba Buena 14-15*
Implementing Electronic Medical Records (EMR) in Homeless Health Care Settings *Golden Gate A*
Dignity Heals *Golden Gate B*
Overcoming Obstacles to Meeting Clinical Benchmarks for Homeless HIV Positive Youth *Pacific H*
Educating Future Physicians in Homeless Health Care: A Collaboration Between a Department of Family Medicine and an HCH Program *Pacific I*
Engaging Homeless Youth in Integrated Intensive Outpatient Treatment and Medical Services *Pacific J*
Developing a Quality Audit Program for Homeless Patients Served in Community Clinics *Sierra I*
2:45 - 3:15 pm Break

CONFERENCE SCHEDULE

- 3:15 - 4:45 pm Workshops
Integrating Screening, Brief Intervention, and Referral to Treatment (SBIRT) Within HCH Clinics *Yerba Buena 10-11*
Working with Children Experiencing Homelessness: Tips, Challenges and Program Ideas *Yerba Buena 12-13*
No One Left Behind: Disaster Planning for People Experiencing Homelessness *Yerba Buena 14-15*
Integrating Direct Service and Advocacy at Your Organization *Golden Gate A*
HRSA Update *Yerba Buena 9*
Doctors Without Walls: Starting a Medical Outreach Program for Unsheltered Homeless Care and Emergency Preparedness *Pacific H*
It's Ladies' Night! Oh, What a Night! *Pacific I*
A Paradigm Shift in Benefits Assistance: Central City Concern's Unique Model *Pacific J*
Nursing Care for Transgender Clients *Sierra I*
- 5:15 - 6:15 pm HCH Clinicians' Network Annual Membership Meeting *Golden Gate A*
- 5:30 - 7:30 pm Welcoming Reception *Yerba Buena 9*
- 7:00 - 8:00 pm 12-Step Meeting *Sierra K*
- 8:00 - 10:00 pm Film Showing *Golden Gate B*

Friday, June 4

- 7:00 - 8:00 am 12-Step Meeting *Sierra K*
- 7:30 am - 5:30 pm Registration *South Registration*
- 7:30 am - 5:30 pm Resource Room Open *Golden Gate C*
- 7:30 - 8:30 am Breakfast | Specialty Networking *Yerba Buena 9*
- 8:30 - 10:00 am Plenary Session *Yerba Buena 9*
HCH Clinicians' Network Award for Outstanding Service
Conference Keynote Addresses: Jim Macrae and Barbara Poppe
- 10:00- 10:30 am Break | Poster Presentations *Golden Gate C*
- 10:30 - 12:00 noon Workshops
Spare Some Social Change *Yerba Buena 10-11*
Advanced Issues in Documenting Disability *Yerba Buena 12-13*
From Anti-Okie to Jim Crow to New Cities America: Building A New Civil Rights Movement *Yerba Buena 14-15*
Pain Management: Working Toward Best Practices in Homeless Health Care Delivery *Golden Gate A*
Clinical Challenges in Diabetes: Applying the Evidence *Golden Gate B*
Fragile Baby Care: Care and Feeding Challenges of Sheltered Infants and Children *Pacific H*
Tell Someone Who Cares: Minimizing the Effects of Compassion Fatigue Amongst Your Front Line Staff *Pacific I*
Integrating Behavioral Health with Primary Care in the Treatment of Transgendered Individuals Who Are Homeless *Pacific J*
Squat and Rot: The Challenges of Coordinating Health Care Service Delivery and Homeless Outreach to Abandoned Building Dwellers *Sierra I*
- 12:15 - 1:30 pm Luncheon *Yerba Buena 9*
- 12:15 - 1:30 pm National HCH Council Governing Membership Meeting *Club Room*
- 1:45 - 2:45 pm Workshops
Respite Nutritional Care *Yerba Buena 10-11*
Isolation and Recovery Plan for H1N1 and Seasonal Influenza Patients in the Homeless Population *Yerba Buena 12-13*
Only the Good (and Homeless) Die Young: The Perils and Pearls of End-of-Life Care Planning *Yerba Buena 14-15*
Adverse Childhood Experiences (ACE) and Homelessness *Golden Gate A*
What Every HCH Leader Should Know: A Conversation with Administrators (Part 1 of 2) *Golden Gate B*
The Jail InReach Project: A Program of Health Care for the Homeless-Houston *Pacific H*
Women in Foreclosure: Experiencing the Sub-prime Crisis Through the Lives of Women *Pacific I*
Providing Integrated Health Services to Homeless Latino Immigrants in San Francisco *Pacific J*
Developing Partnerships with Dental Schools to Improve Oral Health Care for the Homeless *Sierra I*
- 2:45 - 3:15 pm Break

CONFERENCE SCHEDULE

- 3:15 - 4:45 pm Workshops
Critter and Varmint Infestations Among the Homeless: Medical and Public Health Implications *Yerba Buena 10-11*
Money Matters: Diversifying Financial Resources to Support Your HCH Project in a Challenging Economic Environment *Yerba Buena 12-13*
Hard Cases in Supportive Housing: Defining the Limits of Housing First *Pacific I*
Motivational Interviewing for Health Practitioners *Golden Gate A*
Executive Directors and Medical Directors: Leading Together (Part 2 of 2) *Golden Gate B*
Peer Advocates Do EVERYTHING, and What You Can Learn From Us! *Pacific H*
Respite Tales of the City: Exceptional Care for Exceptional Times *Yerba Buena 14-15*
Clinical Dilemmas in Liver Disease *Pacific J*
Integrating Mental Health, Substance Abuse and Medical Health Care at HCH Clinics with Multiple Providers: The Pittsburgh Model *Sierra I*
- 5:30 - 6:30 pm Rally for Human Rights *United Nations Plaza*
- 7:00 - 8:00 pm 12-Step Meeting *Sierra K*
- 8:00 - 10:00 pm Film Showing *Golden Gate B*

Saturday, June 5

- 7:00 - 8:00 am 12-Step Meeting *Sierra K*
- 7:30 - 11:00 am Resource Room Open *Golden Gate C*
- 7:30 - 8:30 am Breakfast | Roundtable Discussions *Yerba Buena 9*
- 9:00 - 10:30 am Workshops
Pathways to Mental Health Recovery Part 1: HCH & PATH Partnerships *Yerba Buena 10-11*
OBOT (Office Based Opiate Addiction Treatment) Program in the Homeless Population *Yerba Buena 12-13*
Social Connectedness: Embedding People Back Into Communities *Yerba Buena 14-15*
Health Reform: The Good, the Bad, and the Ugly for HCH Clinics and Clients *Golden Gate A*
Introduction to Motivational Interviewing *Golden Gate B*
Hepatitis C Treatment in Primary Care for the Homeless *Pacific H*
Caring for Vulnerable Populations: How Do We Measure Success? *Pacific I*
Supportive Housing, Medical Home: Integrating Supportive Housing into Health Care Policy and Practice *Pacific J*
- 10:30 - 11:00 am Break
- 11:30 am - 12:30 pm Workshops
Pathways to Mental Health Recovery Part 2: HCH & PATH Partnerships *Yerba Buena 10-11*
Integrated Medical and Mental Health Group Visits in a Medical Respite Setting *Yerba Buena 12-13*
Outreach Roundtable: Bringing Together Innovative Practices from Migrant Health and Health Care for the Homeless *Golden Gate A*
Keeping Difficult People in Care: Behavioral Issues & Clinic Safety *Golden Gate B*
Enhancing Treatment Outcomes Through the Use of Acupuncture and Yoga in the Group Setting *Yerba Buena 14-15*
Bringing America Home in Rural, Frontier and Small Town America *Pacific I*
- 1:00 - 2:00 pm Open Planning Session for 2011 National Health Care for the Homeless Conference *Yerba Buena 10-11*
- 1:00 - 4:00 pm Clinicians Network Steering Committee Meeting *Sierra K*

As you depart, please return your plastic name badge holders to the registration desk for future re-use.

OPENING PLENARY

Thursday, June 3, 8:30 am | Yerba Buena Salon 9

Welcome and Opening Remarks

Marion Scott, MSN, RN, President, National Health Care for the Homeless Council

Capt. Henry Lopez, Jr., MSW, Director, Office of Minority and Special Populations, Health Resources and Services Administration, US Department of Health and Human Services

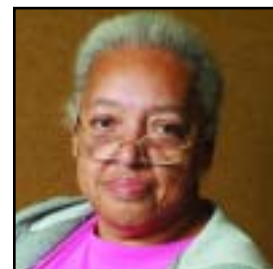
Barbara Wismer, MD, MPH, 2010 Chair, Health Care for the Homeless Clinicians' Network

The Ellen Dailey Consumer Advocate Award

Amy Grassetto, Chair of the National Consumer Advisory Board, will present the annual Dailey Award to an HCH consumer who has become a noted advocate and leader in his community and nationally, *Ulysses Maner*, of the House of Hope in Fort Lauderdale, Florida. This award honors the memory of the founding mother of the National Consumer Advisory Board, Ellen Dailey, who was a powerful and articulate advocate for homeless people's access to health care.



Ulysses Maner



Ellen Dailey

The Susan Neibacher Address

Barbara Conanan, RN, MS, will introduce the 2010 Neibacher speaker. Barbara served in the National Program Office for the original HCH Demonstration Program, working closely with both Susan Neibacher and Jim O'Connell. She directs the HCH project that was operated for 40 years by the Department of Community Medicine of St. Vincent's Hospital in lower Manhattan, until the hospital's closure several weeks ago. The project, one of ten in New York City, will continue to operate through Mt. Sinai Hospital and Lutheran Family Health Centers.



Susan L. Neibacher



Barbara Conanan

James J. O'Connell, MD, President of the Boston Health Care for the Homeless Program, will deliver the 2010 Susan L. Neibacher Address, "Reflections on 25 Years of HCH and Our Future Directions." Nationally recognized as one of the preeminent experts on homelessness and health care, Dr. O'Connell helped found the Boston HCH Program in 1985.



James J. O'Connell

This annual address memorializes Susan Neibacher, MSW, a Health Care for the Homeless pioneer from New York City who insisted that advocacy is central to the HCH model of care.

Closing Remarks

John Lozier, MSSW, Executive Director, National Health Care for the Homeless Council

FRIDAY PLENARY

Friday, June 4, 8:30 am | Yerba Buena Salon 9

Welcome and Opening Remarks

Tom Andrews, BS, Vice President, National Health Care for the Homeless Council, President, St. Joseph's Mercy Care Services, Atlanta, Georgia

Health Care for the Homeless Clinicians' Network Award for Outstanding Service



Barbara Lucci

Jan Caughlan, MSW, LCSW-C, 2011 Chair of the Health Care for the Homeless Clinicians' Network, and Larry Gottlieb, MSW, MPA, Director of Homeless and Outreach Services at Eliot Community Human Services, will present the annual Award for Outstanding Service to Barbara Lucci, MEd, LSW, MA. Barbara is an Outreach Clinician at Eliot Community Human Services in Everett, Massachusetts, and a colleague notes that she "carefully builds trust and respects client autonomy, while utilizing a language that resonates well the client's world. This has resulted in Barbara being able to connect with the hardest to reach and most vulnerable among the homeless."

Federal Perspectives on Health Care for the Homeless



Jim Macrae

Introduction of Speakers: Capt. Henry Lopez, Jr., MSW, Director, Office of Minority and Special Populations, HRSA

Jim Macrae, Associate Administrator for Primary Care, Health Resources and Services Administration

Barbara Poppe, Executive Director, United States Interagency Council on Homelessness



Barbara Poppe

HCH Perspectives on the Reformed Health Care Environment



Kevin Lindamood

Kevin Lindamood, MSW, Director of External Affairs, Health Care for the Homeless, Inc, Baltimore, Maryland

Closing Remarks

John Lozier, MSSW, Executive Director, National Health Care for the Homeless Council

HIGHLIGHTS

Welcoming Reception

*Thursday, June 3, 5:30 - 7:30 pm,
Yerba Buena Salon 9*

After the first full day of conference activities, join us for a festive early evening gathering. Come meet new people, get reacquainted with others, and relax with music, hors d'oeuvres and drinks.

Rally for Human Rights

Friday, June 4, 5:30 pm, United Nations Plaza

The National Consumer Advisory Board, SF Coalition on Homelessness, Western Regional Advocacy Project and social justice groups throughout the Bay Area invite you to a spirited rally at the nearby United Nations Plaza, where the Universal Declaration of Human Rights will be celebrated. Come raise your voice in solidarity against the criminalization of poor, homeless and disabled people and celebrate the fundamental human right of health care and housing for all. Love of art, music, dancing and good spirits required! Walkers will leave the hotel lobby at 5:15.

Continuing Education and Barcode Attendance Tracking

Please ensure that your plenary and workshop attendance is accurately recorded by having your name badge scanned at each session. For the two morning plenary sessions, have your badge scanned before 8:45 am, as you enter. For workshop sessions, have your badge scanned as you leave. You must have your badge scanned at a session in order to receive credit; attendance cannot be retroactively recorded. At the conclusion of the conference, you will receive an email inviting you to evaluate the conference overall and the specific sessions you attended. Please use this process to provide your candid evaluation and help us strengthen our conference. Full continuing education policies are available on page 26 of this program.

Plenary and Workshop Webcasts

Both morning plenary sessions, plus Thursday's HRSA Update workshop, will be webcast live from the conference. To participate in the webcast, individuals must register in



Benny Sorrels

advance at www.nhchc.org/2010conference/webcast.html. Videos of these sessions will be available at www.nhchc.org after the conference.

Informal Networking Lunches

Conference luncheons are not formally programmed. We invite you to use the time to network with your colleagues, enjoy a leisurely meal, and prepare for a busy afternoon and evening ahead.

HCH Clinicians' Network Annual Membership Meeting

Thursday, June 3, 5:15 - 6:15 pm, Golden Gate A

This member-led group invites all conference attendees to its annual membership meeting, where you will meet Network leaders, members and staff and learn about opportunities for involvement and leadership development. Network officers will provide a summary of the year's activities and a glimpse of planned initiatives.

Topical Roundtables

*Thursday, June 3, and Saturday, June 5, 7:30 am,
during breakfast, Yerba Buena Salon 9*

Each roundtable will focus on a key issue in Health Care for the Homeless. These facilitated discussions allow participants to examine ways to overcome barriers to success and share solutions. Join others and contribute your own thoughts and experiences. (A list of topics for each day appears on page 25 of this program.)

HIGHLIGHTS

Specialty Networking

Friday, June 4, 7:30 am, during breakfast, Yerba Buena Salon 9
During Friday's breakfast, tables will be labeled by professional specialty, providing an opportunity to meet colleagues who share your clinical discipline or are in your line of work. Tables will be designated for consumer advisors and advocates, physicians, nurses, social workers, drug and alcohol counselors, program administrators, and government officials. Please join the group that best fits your professional role to enjoy informal networking and discussion.

Site Tours

Site tours of several local service providers are available throughout the conference; please visit the registration area to sign up for organized visits to the San Francisco Respite Program, Tom Waddell Health Center, Direct Access to Housing program sites, Glide Health Services, St. Anthony Clinic, and the Mission Neighbor Resource Center. Tours will take place Wednesday evening and during the day on Thursday and Friday, and all facilities are located within walking distance or accessible by public transportation. Advance sign-up for the tours is required, and spaces are available on a first-come, first-served basis.



Benny Sorrels

Resource Room

Golden Gate C

A Resource Room with display tables featuring the work of HCH projects and collaborating organizations, along with artwork and products relevant to HCH, will be open throughout the 2010 National HCH Conference & Policy Symposium (see schedule for details).

Poster Displays

Golden Gate C

Poster presentations will showcase clinical and programmatic research on homeless health care issues, patient care, program administration, policy issues, and community collaborations. Posters will be on view whenever the Resource Room is open. Representatives are available to discuss their presentations during breaks, 10:00 - 10:30 am and 2:45 - 3:15 pm, on Thursday and Friday. A list of poster displays appears on page 24 of this program.

Consumer Mentors

The National Consumer Advisory Board is sponsoring a Consumer Mentor Program for first-time consumer

attendees at this year's conference. Mentors are available to provide support, suggest workshops and events to attend, and introduce attendees to other conference

participants. Please visit the Consumer Mentor table in the Registration area to request a mentor.



Film Showings

Join us Thursday and Friday evenings from 8:00 pm to 10:00 pm in Golden Gate B for a showcase of films that explore issues of health care and homelessness. Films will include *Empress Hotel*, a documentary telling the stories of ten residents of a permanent supportive housing program in San Francisco; *Money Driven Medicine*, a look at the economic incentives built into the current health care system; *Art From the Streets*, which tracks five artists in the Austin-based *Art From the Streets* program (whose artwork is showcased in this year's conference materials); and several consumer-produced short films.

HIGHLIGHTS



Hugh Miles

Art From the Streets

The National Health Care for the Homeless Council is deeply appreciative of *Art From the Streets* for allowing us to showcase in our conference materials the work of artists who are homeless or formerly homeless. A volunteer-run program in Austin, Texas, *AFTS* was founded in 1991 by a group of artists as a way to bring positive, nurturing, encouraging experiences and relationships into the lives of homeless individuals. Twice-weekly art classes are the core of the program, giving participants a way to express themselves in a healthy, productive manner. Artists have the opportunity to exhibit and sell their work at an annual public art show, which helps break down barriers of prejudice and fear with feats of beauty and creativity. Many of the artists sell enough paintings to afford rent and living expenses, at least for a while, and all walk away with a new sense of themselves and a feeling of accomplishment.

12-Step Meetings

Thursday morning through Saturday morning, 7:00 am and 7:00 pm, Sierra K

Conference participants will be able to attend 12-step support group meetings for peer support in the journey to recovery.

Business Meetings

If you wish to reserve a small meeting space during the conference, please ask a staff member at the registration table.

Planning for 2011 Conference

Saturday, June 5, 1:00 - 2:00 pm, Yerba Buena 10-11

Join us for an open planning session for the 2011 National Health Care for the Homeless Conference & Policy Symposium. This meeting will provide an opportunity for broad input regarding potential 2011 conference themes and topics. Your active participation and suggestions will help assure the continuing success of these meetings. The 2011 conference will take place June 22-25, in Washington, DC. ■

PRE-CONFERENCE INSTITUTES

Wednesday, June 2, 8:30 am - 4:30 pm

Conducting Practice-Based Health Care for the Homeless Research: Implications for Health Practice, Policy and Advocacy

Sierra H

Speaker presentations and panel discussions will provide the foundation of why Health Care for the Homeless research is important and offer techniques for implementing research in practice-based settings. The challenges of how to incorporate research into a busy HCH program will also be addressed. Attendees will work in groups throughout the institute applying research processes to clinical topics of interest determined by each group.

Creating Healthy Organizations: Innovative Leadership in Homeless Services

Sierra I

This institute will blend didactic instruction with video and audio segments. Breakout groups will be used to disseminate learning objectives. Real-life case studies led by executive directors in the homeless services field will be used as a tool to create discussions on strategic planning, leadership, recruitment, self care, working organizational structure and behavior models and sustainability.

Health Care for the Homeless: Advanced Clinical Topics

Golden Gate A

This institute will allow experienced staff members across various disciplines to share their best practices (and biggest challenges) with the goal of each participant being able to improve their work. The workshops will model effective group strategies that participants can immediately bring back to their projects, and panels will address real life clinical questions posed by other panel members and participants. Topics will include: working with dying, death, and loss; working with people who are violent; and working with active drug users.

Medical Respite Care Everywhere: Building Our Future

Golden Gate B

This institute will include concurrent sessions to meet the learning needs of both new and established program providers. The morning session will include an introduction to medical respite care and program development. A concurrent advanced session will focus on funding strategies, medical respite policy and advocacy issues, and implications and solutions for reducing the incidence of administrative discharge and patients who leave against medical advice. During the afternoon, both new and established program providers will come together to learn and share approaches to handling challenging clinical and administrative medical respite cases.

Walking the Talk: Integrating Consumers Into the Delivery of Homeless Services

Sierra K

Consumers are living ambassadors of recovery who can use their personal experiences and direct access to the culture of people who are still homeless. This institute provides proven strategies, lessons learned, tools and resources to break through the barriers to consumer integration in homeless services. The impact of consumer disclosure on the consumer-provider, their colleagues and the organization is discussed using a case study and successful models are presented for use in HCH projects. Two consumer networks supported by the Centers for Mental Health Services (CMHS) in SAMHSA are described and their influence on homeless service delivery detailed.

WORKSHOP DESCRIPTIONS

Thursday, June 3, 10:30 am - 12:00 noon

Safe Transitions: Improving Discharges from Hospital to Respite and From Respite to the Community

Yerba Buena 10-11

This presentation will address common communication gaps, problematic hand-offs, and other challenges in transitioning the homeless client from the hospital to medical respite and ultimately to the community. Introductory level.

Presenters: Michelle Schneidermann, MD, University of California San Francisco, San Francisco, CA; Shannon Smith, RN, MSN, CNL, San Francisco Dept of Public Health/Housing and Urban Health/Medical Respite and Sobering Center, San Francisco, CA; Mark Hamilton, MSW, San Francisco Dept. of Public Health/Housing and Urban Health/Medical Respite, San Francisco, CA.

Providing Comprehensive Health Care to Patients Who Inject Drugs

Yerba Buena 12-13

This presentation will describe a model for providing comprehensive prevention. We will focus on treatment options, blood borne pathogens, soft tissue infections, and overdose prevention.

Presenters: Shannon Riley, BSN, Mission Neighborhood Resource Center, San Francisco, CA; Emalie Huriaux, MPH, San Francisco Department of Public Health, San Francisco, CA; Eliza Wheeler, MSCJS, MPA, Harm Reduction Coalition, Oakland, CA.

Homelessness and Traumatic Stress

Yerba Buena 14-15

Participants will learn about the connection between trauma and homelessness, how it impacts relationships, and the implications for working with clients day-to-day. Introductory level.

Presenters: Katie Volk, MA, National Center on Family Homelessness, Newton, MA; Kathleen Guarino, LMHC, National Center on Family Homelessness, Newton, MA.

Consumer Advisory Boards (CABs)

Golden Gate B

Presenters will explain the HCH Project Consumer Advisory Board (CAB) concept as a way to reinforce consumer governance in the HCH project. This panel will discuss organizing and sustaining a CAB and give examples of benefits to the HCH projects and communities. Introductory level.

Presenters: Reginald Hamilton, JD, National Consumer Advisory Board, Detroit, MI; Marianne Malott, National Consumer Advisory Board, Eugene, OR; Antoinetta Stadlman III, Tom Waddell Clinic, San Francisco, CA; Ulysses Maner, CPS, House of Hope, Inc., Fort Lauderdale, FL.

Differences Between Self-Reported and Actual Conditions Associated with a High Mortality Risk: Updates on the Vulnerability Index

Pacific H

Speakers will present a study that is currently underway in San Francisco to compare self-reported conditions to actual conditions. Advanced level.

Presenters: Becky Kanis, MS, Common Ground, New York, NY; Deborah Borne, MD, MSW, Tom Waddell Health Center, San Francisco, CA; Raj Parek, MD, San Francisco First Homeless Outreach, San Francisco, CA.

A Collaborative Approach to Providing Pediatric Care for Homeless Families

Pacific I

Our integral approach to assessing families for Housing, Outreach, Medical/Mental Health, Education, and Social Services (HOMES), assists in the delivery of a wide range of services to many families living in transitional situations. This workshop will address how to bridge the gap between public health, social work, policy, and the most vulnerable homeless families. Introductory level.

Presenters: Joseph Crottogini, MPH, Children's Hospital and Research Center Oakland, Oakland, CA; Christine Ma, MPH, MD, Children's Hospital and Research Center Oakland, Oakland, CA; Maya Ponce, MSW, Children's Hospital and Research Center Oakland, Oakland, CA.

Strategic Planning for HCH Projects

Pacific J

Presenters will describe a model for conducting internal and external review, defining strategic areas of focus, and creating implementation plans. Introductory level.

Presenters: Jeff Olivet, MA, Center for Social Innovation, Cambridge, MA; Jennifer Metzler, MPH, Albuquerque Health Care for the Homeless, Albuquerque, NM.

The Intersections of Homelessness and Domestic and Sexual Violence

Golden Gate A

This workshop will explore the intersections between sexual and domestic violence and homelessness by examining the role of trauma, risk factors, and barriers to accessing services, as well as ways in which perpetrators target victims/survivors based on vulnerability, accessibility, and perceived lack of credibility. Introductory level.

Presenters: Crystal Tenty, MA, The Portland Women's Crisis Line, Portland, OR; Jill Winsor, Outside In, Portland, OR; Natalie Schraner, The Portland Women's Crisis Line, Portland, OR.

WORKSHOP DESCRIPTIONS

What Are the Implications of Medical Home and Meaningful Use?

Sierra I

HRSA initiatives such as Medical Home and Meaningful Use sometimes fit the Community Health Centers better than Health Care for Homeless projects. This workshop will explore the administrative and clinical implications of these initiatives and discuss how homeless people may benefit from them. Advanced level.

Presenters: Allan Ainsworth, PhD, Wasatch Homeless Health Care, Inc., Salt Lake City, UT; Heidi Nelson, MHSA, Heartland Health Outreach, Inc., Chicago, IL.

Thursday, June 3, 1:45 - 2:45 pm

A Billing Room With a View: Developing the Delicate Dance of Checkout With a Supportive Stance

Yerba Buena 10-11

Integrative health care extends the concept of client-focused relationships even through the request for payment or insurance. Glimpse how one agency has tried to navigate the challenging waters of asking homeless individuals to contribute toward costs. Introductory level.

Presenters: Brad Bolchunos, Outside In, Portland, OR; Ann Watterson, Outside In, Portland, OR; Zachary Goldman, Outside In, Portland, OR.

Advocacy Strategies to Protect State Disability Programs

Yerba Buena 12-13

If you've been frustrated by the erosion of safety net programs in your state, please join us to discuss how two states have been working to fight back on cuts to disability assistance programs. Speakers will describe their own individual efforts to collect data, promote consumer and community advocacy, and work with their Executive and Legislative agencies. Introductory level.

Presenters: Bette Iacino, Colorado Coalition for the Homeless, Denver, CO; Barbara DiPietro, PhD, National Health Care for the Homeless Council, Baltimore, MD.

Medical Respite and the Continuum of Care: Housing Options

Yerba Buena 14-15

This presentation will spotlight two medical respite programs that are using HUD dollars to provide Housing First/Shelter Plus Care for permanent housing options, and the role of community awareness and grass root organizing will be discussed. Introductory level.

Presenters: Timothy L. Johnson, BA, BBA, Harmony House Respite Center, Houston, TX; Brooks Ann McKinney, MSW, Raleigh Rescue Mission, Raleigh, NC.

Implementing Electronic Medical Records (EMR) in Homeless Health Care Settings

Golden Gate A

A panel of providers, administrators and front office staff will discuss implementation of an Electronic Health Record and implications for population management and outreach to homeless patients. Topics will include the challenges, improvements and work to come with respect to EHR implementation, government mandates for EHR and meaningful use, and the role for homeless patient management with this new tool. Introductory level.

Presenters: Patricia Dennehey, RN, Glide Health Services, San Francisco, CA; Ana Valdes, MD, St. Anthony Free Medical Clinic, San Francisco, CA; Zeke Montejano, St. Anthony Free Medical Clinic, San Francisco, CA.

Dignity Heals

Golden Gate B

Donna Smith will speak about the importance of personal testimony in moving policy and generating energy in advocacy and highlight consumers and members who have been successful in incorporating personal testimony into their efforts. Audience members will help record live testimony from conference participants to demonstrate the often immediate beneficial impact of sharing personal testimony — dignity heals. Introductory level.

Presenter: Donna Smith, BA, California Nurses Association/National Nurses Organizing Committee, Washington, DC.

Overcoming Obstacles to Meeting Clinical Benchmarks for Homeless HIV Positive Youth

Pacific H

How can we best support at-risk clients in meeting clinical benchmarks? The facilitator will present strategies that Larkin

WORKSHOP DESCRIPTIONS

Street has employed in working with youth around medication adherence and fulfilling basic health care needs, including: regular labs, vaccinations, and dental care. Advanced level.
Presenter: Lara Tannenbaum, MSW, Larkin Street Youth Services, San Francisco, CA.

Educating Future Physicians in Homeless Health Care: A Collaboration Between a Department of Family Medicine and an HCH Program

Pacific I

This workshop will raise important issues around training medical learners in health care for the homeless. Panelists will discuss conflicts including time efficiency, patient respect and confidentiality, and learner vs. patient needs. Introductory level.

Presenters: Nancy C. Elder, MD, MSPH, Department of Family Medicine, University of Cincinnati, Cincinnati, OH; Joseph Kiesler, MD, The Christ Hospital Family Medicine Residency, Cincinnati, OH; Kate Bennett, CEO, Cincinnati Health Network, Cincinnati, OH.

Engaging Homeless Youth in Integrated Intensive Outpatient Treatment and Medical Services

Pacific J

Speakers will explore the ways in which Outside In has worked to provide wrap-around services for youth engaged in intensive outpatient treatment. Discussion will include referrals into the program, screenings and assessments, referrals to community agencies, integration of suboxone treatment, and working internally to provide ongoing medical and social support. Advanced level.

Presenters: Lacey McCarley, BS, Outside In, Portland, OR; Juliana Scholl, LCSW, Outside In, Portland, OR.

Developing a Quality Audit Program for Homeless Patients Served in Community Clinic

Sierra I

Presenters will walk the participants through the nuts and bolts of audit design and implementation. Discussion will include current practices for measuring quality of care at clinics that serve homeless and marginally housed patients and the collaborative process of designing an audit and linking it to clinic, agency and larger consortium. Introductory level.

Presenters: Amy Petersen, MPH, San Francisco Community Clinic Consortium, San Francisco, CA; David Lown, MD, San Francisco Community Clinic Consortium, San Francisco, CA.

Thursday, June 3, 3:15 - 4:45 pm

Integrating SBIRT Within HCH Clinics

Yerba Buena 10-11

Screening, Brief Intervention, and Referral to Treatment (SBIRT) for alcohol and drug misuse is an evidence-based means to reduce alcohol and drug problems among patients. Presenters will train participants on SBIRT and discuss implementation within an HCH clinic setting. Advanced level.
Presenters: Jennifer Williams, MSN, RN, Primary Care Health Services/Health Care for the Homeless, Pittsburgh, PA; Melissa Kuczma, RN, Primary Care Health Services/Health Care for the Homeless, Pittsburgh, PA; Lisa Guizzetti, MPH, Veterans Research Foundation of Pittsburgh, Pittsburgh, PA.

No One Left Behind: Disaster Planning for People Experiencing Homelessness

Yerba Buena 14-15

The unique needs of people who are homeless warrant special attention in a jurisdiction's emergency management plan. Presenters will describe how the local HCH can assist its community in emergency preparedness efforts so that no person is left behind when disaster strikes. Introductory level.
Presenters: Sabrina Edgington, MSSW, National Health Care for the Homeless Council, Nashville, TN; Mollie Melbourne, MPH, MEP, National Association of Community Health Centers, Bethesda, MD; Carrie Bach, MSN, RN, Los Angeles County Department of Public Health, Los Angeles, CA.

Integrating Direct Service and Advocacy at Your Organization

Golden Gate A

Speakers will discuss the role of advocacy in HCH work and ways to integrate advocacy into direct service. The workshop will provide specific examples of how to participate in advocacy at local, state, and federal levels. Introductory level.
Presenters: Kevin Lindamood, MSW, Health Care for the Homeless, Inc., Baltimore, MD; Marc Wetherhorn, MBA, National Association of Community Health Centers, Lyndhurst, VA.

WORKSHOP DESCRIPTIONS

HRSA Update

Yerba Buena 9

The Health Resources and Services Administration (HRSA) provides major support to Health Care for the Homeless projects and other Health Centers, and HRSA's policies affect much that is done within HCH. HRSA officials will present the agency's latest policy directions. Note: This session will be webcast live and a video of the workshop will be available at www.nhchc.org after the conference. Introductory level.

Presenter: Jim Macrae, Health Resources and Services Administration, Rockville, MD.

Doctors Without Walls: Starting a Medical Outreach Program for Unsheltered Homeless Care and Emergency Preparedness

Pacific H

Speakers will review the International Street Medicine Field and discuss the connections between disaster and street medicine. The specific example of Doctors Without Walls - Santa Barbara Street Medicine will be presented with a discussion about the challenges of creating a non-profit with a mission to provide medical care for the homeless. Advanced level.

Presenters: Noemi Doohan, MD, Doctors Without Walls - Santa Barbara Street Medicine, Santa Barbara, CA; Jennifer Ferraez, LCSW, Doctors Without Walls - Santa Barbara Street Medicine, Santa Barbara, CA; James Withers, MD, Operation Safety Net, Pittsburgh, PA; Neil Jayasekera, MD, Contra Costa Regional Medical Center, Martinez, CA.

Working with Children Experiencing Homelessness: Tips, Challenges, and Program Ideas

Yerba Buena 12-13

Children experiencing homelessness have unique mental and physical health issues. In many cases, programming for children is not a high priority for agencies working with limited budgets. Speakers will present best practices and models, drawing on experience with trauma-informed care. Introductory level.

Presenters: Katie Volk, MA, National Center on Family Homelessness, Newton, MA; Kathleen Guarino, LMHC, National Center on Family Homelessness, Newton, MA.

It's Ladies' Night! Oh, What a Night!

Pacific I

How do we engage homeless and marginally housed women to participate in holistic health care? The speakers have created a model that allows women to participate at their own pace by using the spirit of harm reduction and meeting them "where they are at." Introductory level.

Presenters: Vero Majano, Mission Neighborhood Resource Center, San Francisco, CA; Monica Munoz, BA, Mission Neighborhood Resource Center, San Francisco, CA; Jen Plummer, MA, Psychiatric Foundation of Northern California, San Francisco, CA.

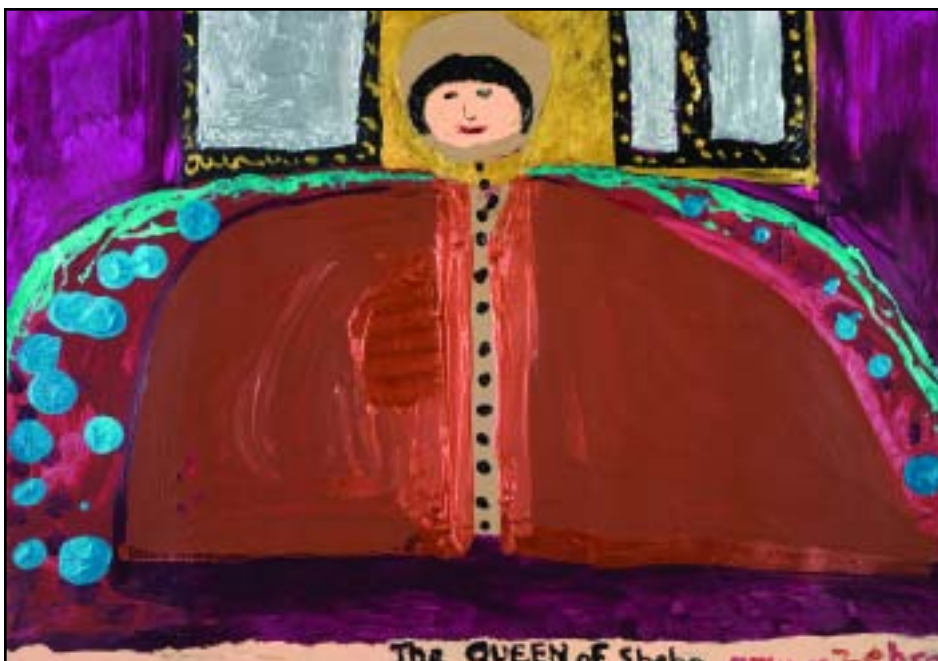
A Paradigm Shift in Benefits Assistance: Central City Concern's Unique Model

Pacific J

The Old Town Clinic maintains a Recuperative Care Program (RCP) and Benefits and Entitlements Specialist Team (BEST). These two programs work together to leverage the funding that comes from local hospitals into the sustainable, long-term benefits that make permanent housing and self sufficiency possible. Advanced level.

Presenters: Nic Granum, MPA, EMT-B, Central City Concern, Portland, OR; Kascadare Causeya, BA, Central City Concern, Portland, OR; Todd Engstrom, MD, Central City Concern, Portland, OR.

Debbie Overs



WORKSHOP DESCRIPTIONS

Nursing Care for Transgender Clients

Sierra I

Thinking of starting a transgender clinic? Working with more and more transgender folks and wondering if you can be more focused in your delivery of care? Speakers will cover areas such as orientation tips for new staff/volunteers, suggestions of how to deal with name incongruities, teaching injection techniques, and TG resource lists. Introductory level.

Presenters: Angie Davidson, MSN, RN, Tom Waddell Health Center, San Francisco, CA; Chris Rusev, RN, Tom Waddell Health Center, San Francisco, CA; Mary Monihan, MS, RN, Tom Waddell Health Center, San Francisco, CA.

Friday, June 4, 10:30 am - 12:00 pm

Spare Some Social Change: Advocacy Strategies for Ending and Preventing Homelessness

Yerba Buena 10-11

This workshop will assess the causes and solutions to ending and preventing homelessness and provide information on advocacy work being done to address homelessness at the federal level. Participants will learn about national campaigns, such as the Campaign to End Child Homelessness, and best practices for doing advocacy. Advanced level.

Presenters: Barbara DiPietro, PhD, National Health Care for the Homeless Council, Baltimore, MD; Katie Volk, MA, National Center on Family Homelessness, Newton, MA.

Advanced Issues in Documenting Disability

Yerba Buena 12-13

A patient has a cluster of conditions that clearly impair his function, but none of them equal a Blue Book listing. Another patient faces frequent hospitalizations and chronic homelessness, but insists her health is just fine. Are SSI/SSDI entitlements out of reach for these people? Not necessarily. This popular workshop features two Documenting Disability Speakers' Bureau physicians discussing complex SSA cases and highlighting promising practices for successful outcomes. Advanced level.

Presenters: Barry Zevin, MD, Tom Waddell Health Center, San Francisco Department of Public Health, San Francisco, CA; James O'Connell, MD, Boston Health Care for the Homeless Program, Boston, MA; Heather Rippetoe, MA, MA, National Health Care for the Homeless Council, Nashville, TN.

From Anti-Okie to Jim Crow to New Cities

America: Building A New Civil Rights Movement

Yerba Buena 14-15

This interactive panel will share research on the direct correlation between "quality of life" enforcement programs, business improvement districts, and the gentrification of urban corridors throughout the U.S. Speakers will present some of the skills, strategies, and resources they are using to build a regional campaign to counter the emergence of laws, policing programs, and special courts that criminalize people solely on the basis of their social, economic, and housing status. Advanced level.

Presenters: Paul Boden, Western Regional Advocacy Project, San Francisco, CA; Boona Cheema, Building Opportunities for Self-Sufficiency, Berkeley, CA; Pete White, Los Angeles Community Action Network, Los Angeles, CA.

Pain Management: Working Toward Best Practices in Homeless Health Care Delivery

Golden Gate A

From the complications associated with past addictions to the limitations in available guidelines and resources, homeless health care providers often feel lost in their need to manage the complex array of pain concerns in their populations. This workshop will focus on describing the latest research data and newest suggested practice guidelines for providers/prescribers working with homeless and underserved patients. Advanced level.

Presenters: Barbara Wismer, MD, MPH, Tom Waddell Health Center, San Francisco Department of Public Health, San Francisco, CA; Lisa Thompson, DNP, PMHNP-BC, Colorado Coalition for the Homeless - Stout Street Clinic, Denver, CO; Jay Griffith, MD, Colorado Coalition for the Homeless, Denver, CO; Margot Kushel, MD, UCSF/San Francisco General Hospital, San Francisco, CA.

Clinical Challenges in Diabetes: Applying the Evidence

Golden Gate B

This workshop will examine evidence-based research in the overall care of clients with diabetes, and how to apply them effectively in the Health Care for the Homeless setting. Strategies will emphasize the challenges and realities of delivering high quality care when faced with challenging resource limitations. Advanced level.

Presenter: Ed Farrell, MD, Colorado Coalition for the Homeless, Denver, CO.

WORKSHOP DESCRIPTIONS

Fragile Baby Care: Care and Feeding Challenges of Sheltered Infants and Children

Pacific H

Homeless, low income and ethnic minority mothers are at a greater risk for having low-birth rate infants that pose feeding challenges in a sheltered setting, both for parents and shelter staff. This workshop will discuss these challenges while offering techniques useful for clinicians and staff to improve the overall care of these vulnerable children. Advanced level.

Presenters: Mary M. Marfisee, MD, MPH, UCLA School of Nursing Health Center at the Union Rescue Mission, Los Angeles, CA; Betty E Schulz, RN, C-PNP, Mercy Children's Health Outreach Project, Baltimore, MD.

Tell Someone Who Cares: Minimizing the Effects of Compassion Fatigue Amongst Your Front Line Staff

Pacific I

So much of our literature and training emphasizes the risk and prevention of burnout among clinicians, but what about your front line staff? Presenters will share video, experiences and lessons learned in developing training and ongoing support for the front line staff of a busy multidisciplinary clinic. Advanced level.

Presenters: Jay Bennett, Outside In, Portland, OR; Angela Hurley, MEd, Outside In, Portland, OR; Traci Chenette, LCSW, Outside In, Portland, OR.

Integrating Behavioral Health with Primary Care in the Treatment of Transgendered Individuals Who Are Homeless

Pacific J

Speakers will discuss BHCHP's experience providing Behavioral Health (BH) services to transgender individuals; services are provided within an informed consent model. When BH and primary care are integrated, clients are more apt to seek BH services and engage in them more openly than when they perceive BH standing between them and prescriptions. Advanced level.

Presenters: Pam Klein, RN, MS, ACRN, Boston Health Care for the Homeless Program, Boston, MA; Patricia Cullen, LIMHC, Boston Health Care for the Homeless Program, Boston, MA.

Squat and Rot: The Challenges of Coordinating Health Care Service Delivery and Homeless Outreach to Abandoned Building Dwellers

Sierra I

Four years after Hurricane Katrina, New Orleans has over 65,000 abandoned buildings, and an estimated 6,000 abandoned building dwellers (ABD) and squatters. The members of UNITY of Greater New Orleans' Welcome Home outreach team will speak about this subpopulation of the broader homeless contingent, which is characterized by special challenges that make both traditional outreach and health care services provision especially complicated. Advanced level.

Presenters: Shamus Rohn, MA, UNITY of Greater New Orleans, New Orleans, LA; Mike Miller, MSW, UNITY of Greater New Orleans, New Orleans, LA; Clarence White, III, BSW, UNITY of Greater New Orleans, New Orleans, LA.

Friday, June 4, 1:45 - 2:45 pm

Respite Nutritional Care

Yerba Buena 10-11

Speakers will present a medical model for implementing a nutritional care program, including a checklist for case managers to help identify nutrition risks for clients. Harmony House Respite Center provides nutritional assessments and makes recommendations for nutritional care for all residents upon admission, monthly and upon consults, and outcome measures have been established to evaluate the improvement of the nutritional care of the residents. Introductory level.

Presenters: Bonnie Berube, MS, BLB Consulting, Inc., Houston, TX; Preston Witt, BA, Harmony House Respite Center, Houston, TX.

Isolation and Recovery Plan for H1N1 and Seasonal Influenza Patients in the Homeless Population

Yerba Buena 12-13

With the resurgence of H1N1 influenza, the flu season has become an even bigger concern for homeless populations. The key to reducing morbidity and mortality is proper isolation to avoid transmission. Fourth Street Clinic, in conjunction with its community partners, has devised a continuity plan to provide proper isolation and recovery areas for homeless patients with influenza. Introductory level.

Presenters: Allan Ainsworth, PhD, Fourth Street Clinic, Wasatch Homeless Health Care, Salt Lake City, UT; Sara McEvoy, PA-C, Fourth Street Clinic, Wasatch Homeless Health Care, Salt Lake City, UT.

WORKSHOP DESCRIPTIONS

Only the Good (and Homeless) Die Young: The Perils and Pearls of End-of-Life Care Planning

Yerba Buena 14-15

Planning for the end-of-life is particularly important for homeless adults, as they are more likely to die young and have high mortality rates. The presenter is completing a study that tested a homeless-specific advance care directive; this workshop will offer practical tools for successful end-of-life care planning. Advanced level.

Presenter: Dawn Petroskas, RN, BSN, University of Minnesota, Center for Bioethics, Minneapolis, MN.

Adverse Childhood Experiences (ACE) and Homelessness

Golden Gate A

The Committee on the Shelterless (COTS) has spent years upgrading its service model to improve its capacity to transform the lives of homeless individuals and families. Focused on breaking the cycle of homelessness, COTS offers a comprehensive approach to addressing adverse childhood experiences (ACEs) as a core underlying issue. This speaker presentation describes the COTS model, including its theoretical frame and ACE research foundation. Advanced level.

Presenters: Heather Larkin, MSW, PhD, The State University of New York at Albany, Albany, NY; John Records, Committee on the Shelterless, Petaluma, CA; Mike Johnson, Committee on the Shelterless, Petaluma, CA.

What Every HCH Leader Should Know: A Conversation with Administrators (Part 1 of 2)

Golden Gate B

The Program Director and Medical Director roles continue to be essential for effective HCH projects. A panel of experienced HCH directors will explore the unique competencies and skills of each role and discuss different ways a team approach manifests itself in HCH projects. Attendees will hear examples of various models and learn about resources available for professional development and support. This is an encore presentation of the well-received workshop from 2008 and 2009. Introductory level.

Presenters: Sharon Brammer, FNP, BSN, Franklin Primary Health Center, Inc., Mobile, AL; Heidi Nelson, MHSA, Heartland Health Outreach, Inc., Chicago, IL; Bobby Watts, MPA, Care for the Homeless, New York, NY; Doreen Fadus, MEd, Health Care for the Homeless/Mercy Medical Center, Springfield, MA.

The Jail InReach Project: A Program of Health Care for the Homeless - Houston

Pacific H

The Jail InReach Project is an intensive case management intervention established to help combat the increasingly urgent and astoundingly common cycling of mentally ill homeless between jails and the streets. Speakers will present program data that indicate a dramatic impact on the number of arrests per year, number of days spent in jail and severity of each crime for those participating in the program. Introductory level.

Presenters: David Buck, MD, MPH, Health Care for the Homeless - Houston, Baylor College of Medicine, Houston, TX; Frances Isbell, MA, Health Care for the Homeless - Houston, Houston, TX; Carlie Ann Brown, Health Care for the Homeless - Houston, Houston, TX.

Women in Foreclosure: Experiencing the Sub-prime Crisis Through the Lives of Women

Pacific I

Women are quietly bearing the brunt of foreclosures, and the disproportionate way that women are impacted has left providers on the front lines with a problem where the national conversation is absent of the voices who are impacted the most. Discussion will center on how practitioners can advocate for those impacted by the crisis. Advanced level.

Presenter: Amy Baker, MSW, Graduate Center of the City University of New York at Hunter College School of Social Work, Philadelphia, PA.

Providing Integrated Health Services to Homeless Latino Immigrants in San Francisco

Pacific J

Does your clinic serve a Latino immigrant population? Speakers will describe a model for providing integrated health services, mental health care, housing advocacy and survival services. Introductory level.

Presenters: Laura Guzman, JD, Mission Neighborhood Resource Center, San Francisco, CA; Anibal Mejia, MFT, Psychiatric Foundation of Northern California, San Francisco, CA; Alice Liu, NP, Mission Neighborhood Resource Center, San Francisco, CA.



WORKSHOP DESCRIPTIONS

Developing Partnerships with Dental Schools to Improve Oral Health Care for the Homeless

Sierra I

Speakers will share information about University of Southern California School of Dentistry's collaborations with community organizations and clinics to provide care to the homeless in central Los Angeles. In 2000 we jointly developed an eight-chair clinic in a homeless shelter and in 2009 opened a seven-chair clinic in an integrated FQHC/Health Department site. Introductory level.

Presenters: Niel Nathason, MA, MPH, University of Southern California, School of Dentistry, Los Angeles, CA; Laura Kathleen Elizondo, DDS, USC School of Dentistry - Union Rescue Mission, Los Angeles, CA.

Friday, June 4, 3:15 – 4:45 pm

Critter and Varmint Infestations Among the Homeless: Medical and Public Health Implications

Yerba Buena 10-11

Homeless people are often afflicted with infestations of lice, scabies, and bites from bed bugs and rats. Eliminating infestations in shelter settings can be challenging, and often there misunderstandings and myths as to how the infestations occurred and the most effective treatment. This workshop is a fun, interactive session on the diagnosis, treatment and prevention of common infestations found among homeless clients. Introductory level.

Presenters: Barry Zevin, MD, Tom Waddell Health Center, San Francisco Department of Public Health, San Francisco, CA; Aaron Strehlow, RN, PhD, FNP, NPNP, UCLA School of Nursing Health Center at the Union Rescue Mission, Los Angeles, CA.

Money Matters: Diversifying Financial Resources to Support Your HCH Project in a Challenging Economic Environment

Yerba Buena 12-13

This session will focus on strategies to diversify financial resources to help Health Care for the Homeless projects weather and even thrive in difficult economic environments. Speakers will address restricted and unrestricted dollars, operating and capital funding, public and private grants as well as potential billing sources.

Presenters: Louise Treherne, MSW, LCSW-C, Health Care for the Homeless, Inc., Baltimore, MD; Kevin Lindamood, MSW, Health Care for the Homeless, Inc., Baltimore, MD.

Hard Cases in Supportive Housing: Defining the Limits of Housing First

Pacific I

In the Direct Access to Housing (DAH) program, rare "hard cases" are poorly served, resulting in loss of housing and high cost to the program. Difficult cases are often the focus of feelings of hopelessness that lead to burnout. This workshop will focus on putting these hard cases in perspective and give the participants specific skills on how to manage burnout so that high quality services can be maintained. Advanced level

Presenters: Joshua Bamberger, MD, MPH, San Francisco Department of Public Health, San Francisco, CA; Janet Moomaw, LCSW, Tom Waddell Clinic, San Francisco Dept. of Public Health, San Francisco, CA; Pamela Swedlow, MD, Psychiatrist, San Francisco Department of Public Health, San Francisco, CA.

Motivational Interviewing for Health Practitioners

Golden Gate A

Patient-centered health care encounters typically yield better outcomes than standard directive approaches. Learn about Motivational Interviewing, a brief evidence-based approach that is collaborative, evocative and empowering. Help guide patients to discover their own reasons and resolve to adhere to treatment and make positive behavioral changes. Advanced level.

Presenters: Ken Kraybill, MSW, Center for Social Innovation, Seattle, WA; Wayne Centrone, NMD, MPH, Center for Social Innovation, Portland, OR.

Executive Directors and Medical Directors: Leading Together (Part 2 of 2)

Golden Gate B

In Part 2 of 2, participants will discuss the team approach needed between Executive Director and Medical Director roles in HCH administration. Guided, small group discussions will explore challenges of administering an HCH project within different organizational settings, shared and unique competencies and skills, and resources available for professional development and support for both roles. Advanced level.

Presenters: Marion Scott, MSN, RN, Missouri City, TX; Bob Donovan, MD, Cincinnati Health Network, Inc., Cincinnati, OH; Danielle Robertshaw, MD, Health Care for the Homeless, Baltimore, MD.

WORKSHOP DESCRIPTIONS

Peer Advocates Do EVERYTHING, and What You Can Learn From Us!

Pacific H

Peer Advocates are essential to community members' daily support at the Mission Neighborhood Resource Center; we see over 200 people a day in our drop-in. Speakers will act out short scenarios of the situations we deal with on a daily basis and the creative solutions we find. Introductory level.

Presenters: Ursula Alcaraz, Mission Neighborhood Resource Center, San Francisco, CA; Cynthia Bivens, Mission Neighborhood Resource Center, San Francisco, CA; Danilo Pedroso, Mission Neighborhood Resource Center, San Francisco, CA.

Respite Tales of the City: Exceptional Care for Exceptional Times

Yerba Buena 14-15

This presentation will offer exceptional case studies that demonstrate how respite care is continually challenged to exceed the usual admission criteria in order to meet the community needs of vulnerable patients who cannot be cared for elsewhere. The studies will illustrate gaps in health care delivery and show how respite programs are innovative, creative and flexible. Advanced level.

Presenter: Sarah Ciambone, MS, Boston Health Care for the Homeless Program, Boston, MA.

Clinical Dilemmas in Liver Disease

Pacific J

Hepatitis B, C, and alcohol induced cirrhosis are very prevalent among homeless persons; this population often has co-occurring substance abuse and alcohol problems. This workshop gives an overview of common liver problems and dilemmas clinicians face in diagnosing and treating these problems and offers practical options for adapting standard treatment guidelines. Advanced level.

Presenter: Rena Fox, MD, University of California San Francisco Medical Center, San Francisco, CA.

Integrating Mental Health, Substance Abuse and Medical Health Care at HCH Clinics with Multiple Providers: The Pittsburgh Model

Sierra I

Through integration of medical, mental health, and substance abuse services at co-located clinic settings, patient-, provider-, and system-level barriers to care can be overcome. Speakers will review lessons learned from two

integration projects and provide practical information on how to integrate services in a variety of settings. Introductory level.

Presenters: Lisa Guizetti, MPH, VA Pittsburgh Health Care System, Pittsburgh, PA; Anita DeChancie, BSN, RN, Primary Care Health Services/Health Care for the Homeless, Pittsburgh, PA; Jenny Williams, RN, MSN, Primary Care Health Services/Health Care for the Homeless, Pittsburgh, PA.

Saturday, June 5, 9:00 - 10:30 am

Pathways to Mental Health Recovery Part 1: HCH & PATH Partnerships

Yerba Buena 10-11

Projects for Assistance in Transition from Homelessness (PATH) is a federal program that funds projects designed to assist people with mental illness who are homeless. This workshop will provide a guided tour of an individual's experience with homelessness and mental illness. Presenters will introduce basic techniques of outreach, engagement, and treatment targeted towards providers unfamiliar or anxious about working with people with mental illness. Introductory level.

Presenters: Rachael Kenney, MA, Center for Social Innovation, Denver, CO; Jan Caughlan, MSW, LCSW-C, Health Care for the Homeless, Inc., Baltimore, MD; Alan Pickett, RN, Washtenaw County Project Outreach, Ann Arbor, MI.

OBOT (Office Based Opiate Addiction Treatment) Program in the Homeless Population

Yerba Buena 12-13

This workshop will present the Office Based Opiate Addiction Treatment (OBOT) Program. The OBOT program allows a patient who is addicted to heroin to receive opiate replacement therapy in a primary care health clinic; the session will include a facilitated round table discussion with patients enrolled in the OBOT Program at Tom Waddell Health Center. Advanced level.

Presenters: Margaret Farny, RN, BSN, PHN, RAS, Tom Waddell Health Center, San Francisco, CA; Kim Lynch, RAS, Tom Waddell Health Center, San Francisco, CA.

WORKSHOP DESCRIPTIONS



Dennis Williams

Social Connectedness: Embedding People Back Into Communities

Yerba Buena 14-15

Social connectedness emerges as a dominant need for many persons as they transition from homelessness into housing, and homeless service providers often become the de facto community for a consumer to satisfy this basic human need in addition to providing services and treatment. This workshop will define the challenges in addressing this need, present strategies for homeless service providers to connect to social capital resources in their communities and serve as a bridge for the consumer to access those resources. Advanced level.

Presenters: Livia Davis, MSW, CSWM, Center for Social Innovation, Newton, MA; Laura Gill, RN, MS, Center for Social Innovation, Newton, MA.

Health Reform: The Good, the Bad, and the Ugly for HCH Clinics and Clients

Golden Gate A

This workshop will present the nuts and bolts of the health reform legislation, emphasizing those aspects of greatest importance to HCH clinics and clients. The presentation will include improvements and expansions, as well as highlight areas of concern and uncertainty. The discussion will focus on how to plan for changes coming to Medicaid, Medicare, community health centers, workforce development, and a myriad of new initiatives aimed at serving vulnerable populations and improving health outcomes. Introductory level.

Presenter: Barbara DiPietro, PhD, National Health Care for the Homeless Council, Baltimore, MD.

WORKSHOP DESCRIPTIONS

Introduction to Motivational Interviewing

Golden Gate B

Motivational Interviewing (MI) is a person-centered, goal-oriented, guiding method of communication to help enhance motivation to change. Instead of trying to convince individuals to change, an MI approach helps people talk themselves into changing. This evidence-based approach is effective for care providers of all disciplines in working with people experiencing homelessness. In this training, participants will learn about the core principles, spirit, and methods of Motivational Interviewing. Introductory level.

Presenter: Ken Kraybill, MSW, Center for Social Innovation, Seattle, WA.

Hepatitis C Treatment in Primary Care for the Homeless

Pacific H

Speakers will provide information on treatment of Hepatitis C within an integrated group model. Integrated group medical visits have many providers in one room focused on the treatment of Hepatitis C. Viral response rates for the integrated group model exceed national averages. Introductory level.

Presenters: Charles Preston, PhD, Valley Homeless Health Care Program, San Jose, CA; Cheryl Ho, MD, Valley Homeless Health Care Program, San Jose, CA; Kim Fredericks, RN, Valley Homeless Health Care Program, San Jose, CA.

Caring for Vulnerable Populations: How Do We Measure Success?

Pacific I

This presentation will review the data on current rates of preventive service delivery and chronic disease management and also the literature on recommended screening practices for these patients. Speakers will also address current barriers to provision of these services and provide case studies of pilot models involving patient-centered initiatives to improving quality markers. Advanced level.

Presenters: Monica Bharel, MD, Boston Health Care for the Homeless Program, Boston, MA; Barry Bock, RN, Boston Health Care for the Homeless Program, Boston, MA; Sharad Jain, MD, University of California, San Francisco, San Francisco, CA.

Supportive Housing, Medical Home: Integrating Supportive Housing into Health Care Policy and Practice

Pacific J

Experts in the fields of frequent users, Medicaid, and the relationship between health care and supportive housing

will moderate this discussion, representing national and local initiatives. Advanced level.

Presenters: Heather Lyons, BA, Corporation for Supportive Housing, Portland, OR; Sharon Rapport, MA, Corporation for Supportive Housing, Los Angeles, CA; Peggy Bailey, MA, Corporation for Supportive Housing, Washington, DC.

Saturday, June 5, 11:00 am - 12:30 pm

Pathways to Mental Health Recovery Part 2: HCH & PATH Partnerships

Yerba Buena 10-11

Presenters will describe collaborative efforts, successes, and opportunities that aim to synergize the capacity of programs to positively affect the lives of homeless individuals with mental illness. A case study will illustrate ways that PATH/HCH programs can work together to share resources, staff, and knowledge to address complex issues such as involuntary hospitalization, stigma busting, disability applications, and personal advocacy. Introductory level.

Presenters: Rachael Kenney, MA, Center for Social Innovation, Denver, CO; Jan Caughlan, MSW, LCSW-C, Health Care for the Homeless, Inc., Baltimore, MD; Alan Pickett, RN, Washtenaw County Project Outreach, Ann Arbor, MI.

Integrated Medical and Mental Health Group Visits in a Medical Respite Setting

Yerba Buena 12-13

Speakers will discuss integrated group medical/psychology visits, which bring together many clinicians in one room focused on the treatment of respite patients. Patients report feeling helped and supported, and patients who have been discharged from the respite program and who are now housed return to the medical/psychology group as mentors. Introductory level.

Presenters: Ciara Mahan, PhD, Valley Homeless Health Care Program, San Jose, CA; Audrey Kuang, MD, Valley Homeless Health Care Program, San Jose, CA; Janet Kohl, RN, Valley Homeless Health Care Program, San Jose, CA.

WORKSHOP DESCRIPTIONS

Outreach Roundtable: Bringing Together Innovative Practices from Migrant Health and Health Care for the Homeless

Golden Gate A

Migrant and seasonal farm workers and individuals experiencing homelessness share many of the same barriers to care. The group will discuss innovative solutions to many of the common challenges that Health Care for the Homeless staff experience. Introductory level.

Presenter: Adam Sharma, BA, Health Outreach Partners, Oakland, CA.

Keeping Difficult People in Care: Behavioral Issues & Clinic Safety

Golden Gate B

Working with difficult people in a clinical setting creates numerous challenges, including keeping those consumers engaged in care while maintaining clinic safety. Speakers will review basic safety components, introduce different perspectives of safety, highlight facility issues that affect clinical safety, and provide tools you can use in your clinic to increase safety for consumers and staff. Introductory level.

Presenters: Sandra Aseltine, LCSW, Tom Waddell Health Center, San Francisco, CA; Janet Moomaw, LCSW, Tom Waddell Health Center, San Francisco, CA.

Enhancing Treatment Outcomes Through the Use of Acupuncture and Yoga in the Group Setting

Yerba Buena 14-15

Stress management/wellness groups can be a resource to help participants enhance their ability to cope with multiple stressors interfering with engagement into services, including addictions, pain management, limited interpersonal skills and mental illness. This workshop will describe the benefits of incorporating acupuncture and yoga into the provision of services, as well as how to start a stress management group. Introductory level.

Presenters: Nicole Kennedy, LCSW-C, Health Care for the Homeless, Inc., Baltimore, MD; Elizabeth Wexler, LCSW-C, Health Care for the Homeless, Inc., Baltimore, MD; Diana Keener, Licensed Acupuncturist, Health Care for the Homeless, Inc., Baltimore, MD.

Bringing America Home in Rural, Frontier and Small Town America

Pacific I

This session examines the issues of rural/frontier homelessness, speaks to cultural competency with this population, and offers solutions that have been effective in Montana and Minnesota, including using HPRP funds to prevent homelessness or rapidly rehouse those who have become homeless. Introductory level.

Presenters: Sherri Downing, Council on Homelessness, Helena, MT; Sue Watlov Phillips, LP, LMFT, LICSW, Elim Transitional Housing, Inc., Fridley, MN. ■

Dennis Williams



POSTER DISPLAYS

Poster sessions showcasing innovative research and work by HCH grantees and related organizations from across the country will be on display in the Resource Room in Golden Gate C. Representatives are available to discuss their presentations during breaks from 10:00 - 10:30 am and 2:45 - 3:15 pm on Thursday and Friday.

A Comparison of Experiences with Traditional Health Care and Transgender-specific Care. Susanah Gasper, RN, MSN, PHN, Master of Science in Nursing student, San Francisco State University, San Francisco, CA

Art Therapy as an Evidence-Based Intervention for Methamphetamine Users: A Pilot Study. Juan Aranda, RN, MSN, PHN, Student, San Francisco State University School of Nursing, San Francisco, CA

Building Relationships to Improve Care to Patients Who Utilize Nutritional Supplements and Herbs for Mental Health Disorders. Julie Anne Chinnock, ND, MPH, Attending Physician, Outside In Clinic, Portland, OR

Care and Ancillary Service Utilization Among HIV-Infected Homeless Individuals. Catherine Sanders, MA, Public Health Analyst, Centers for Disease Control and Prevention, Atlanta, GA

Challenges of Treating Chronic Conditions in the Homeless: The Example of Chronic Pain in a Research Cohort of Indigent Adults in San Francisco. Margot Kushel, MD, Associate Professor of Medicine in Resident, UCSF/San Francisco General Hospital, San Francisco, CA

Clinical Acumen Trumps Algorithm: Triage at a Free Clinic for Homeless Men. Peter Norstedt, BA, Medical Student, University of Wisconsin School of Medicine and Public Health, Madison, WI

Creating an Outreach Program for a Hidden, Homeless Population: Horse Racetrack Workers. Joseph Kiesler, MD, HCH Physician, University of Cincinnati Department of Family Medicine/Cincinnati Health Network, Cincinnati, OH

Empiric Treatment of Gonorrhea and Chlamydia in a Homeless Population. Lauren Faricy, BS, Medical Student, Oregon Health Sciences University, Portland, OR

Expanding Dental Services to Homeless Children and Adults in a County Clinic System. Katie Troxler, BA, HCH Program Director, San Mateo Medical Center, San Mateo, CA

Finding Well Being in a Crazy World: Group for Chronically Homeless, Housing First Persons. Jim Bonnar, MD, Psychiatrist to Street Team, Boston Health Care for the Homeless Program, Boston, MA

Health Prevention and Increasing Access to Care in Shelter Based Settings: Safe Harbor Shelter's Health Program. Maryam Bhimjm, MPA, MSW, Shelter Director, Samaritan House: Safe Harbor Shelter, San Mateo, CA; Melissa Moss, MA, Health Case Manager, Samaritan House: Safe Harbor Shelter, San Mateo, CA

Hepatitis C and Homeless Populations. Lillian Gelberg, MD, MSPH, Professor, University of California, Los Angeles, Los Angeles, CA

Hepatitis C Treatment Among Homeless Adults in Skid Row, Los Angeles. Lisa Arangua, University of California, Los Angeles, Los Angeles, CA

HIV Prevention for Homeless Populations: What to Consider When Selecting Interventions. Hirut Kassaye, MPH, Executive Director, Camillus Health Concern, Inc., Miami, FL

Knowledge about Hepatitis C Virus Infection Among Homeless Adults Participating in a Hepatitis A and Hepatitis B Vaccine Completion Program. Darlene Tyler, RN, FNP, PhD, Nurse Practitioner, UCLA School of Nursing Health Center at the Union Rescue Mission, UCLA School of Nursing, Redlands, CA

On the Road to Safe Medication Management: The Pack Your Bag! Campaign. Leticia Moczygemba, PharmD, PhD, Assistant Professor, Virginia Commonwealth University School of Pharmacy, Richmond, VA

Pap Smear Rates in Female to Male Transgender Patients. Linette Martinez, MD, Staff Physician, Tom Waddell Health Center, San Francisco Department of Health, San Francisco, CA

Preparing for a Pandemic: H1N1. Julie Thomas, RN, FNP-BC, Family Nurse Practitioner, Harris County Hospital District Health Care for the Homeless Program, Houston, TX

Recruitment and Retention of Homeless Adults for Research: Conventional and Innovative Ideas. Dawn Petroskas, RN, BSN, Ph.D. Nursing Student, Graduate Research Assistant, University of Minnesota - Center for Bioethics, Minneapolis, MN

Relationship Based Care. Manny Sarria, LCSW, Administrator, Citrus Health Network, Inc., Hialeah, FL

Rewriting the Future: Project Erase Tattoo Removal Program at Outside In. Tymberly Ellis-Field, BA, Tattoo Removal Program Coordinator, Outside In, Portland, OR

Social Discrimination in the Health Care Experiences of Homeless Individuals. Margaret Schaefer, BS, Medical Student, Medical College of Wisconsin, Milwaukee, WI

Visions and Voices: Black and White Photographs from Women Working in the Sex Industry. Crystal Tenty, MA, Direct Service Specialist, Portland Women's Crisis Line, Portland, OR; Moshoula Capous-Desyllas, MSW, PhD, Graduate Research Assistant, Portland State University School of Social Work, Portland, OR

Yoga Therapy-based Group classes for Homeless and At Risk Populations: Inducing Relaxation and Reducing Stress. Marcel Allbritton, PhD, Yoga Therapist and Yoga Teacher, Mind-Body Foundation, San Francisco, CA

ROUNDTABLE DISCUSSION TOPICS

7:30 - 8:30am | Yerba Buena Salon 9

Thursday, June 3

- Support For HCH Project Directors
- Pandemic Flu Planning for Homeless Populations
- Project Homeless Connect
- How to Establish and Promote a Consumer Advisory Board
- Working Together to Get Patients Who are Homeless Onto SSI/SSDI
- Permanent Supportive Housing
- Stress Management/Dealing with Burnout
- Needle Exchange Programs
- Smoking Cessation
- Empowering the Community Through Voting
- Transitioning from Consumer to Staff Member
- Electronic Medical Records
- Special Trauma in Haitian Immigrants
- Integrating Behavior Health and Primary Care
- Medical Homes
- Orientation for New National Council Organizational Members
- Brainstorming *Healing Hands'* Topics
- Public Entity Health Centers

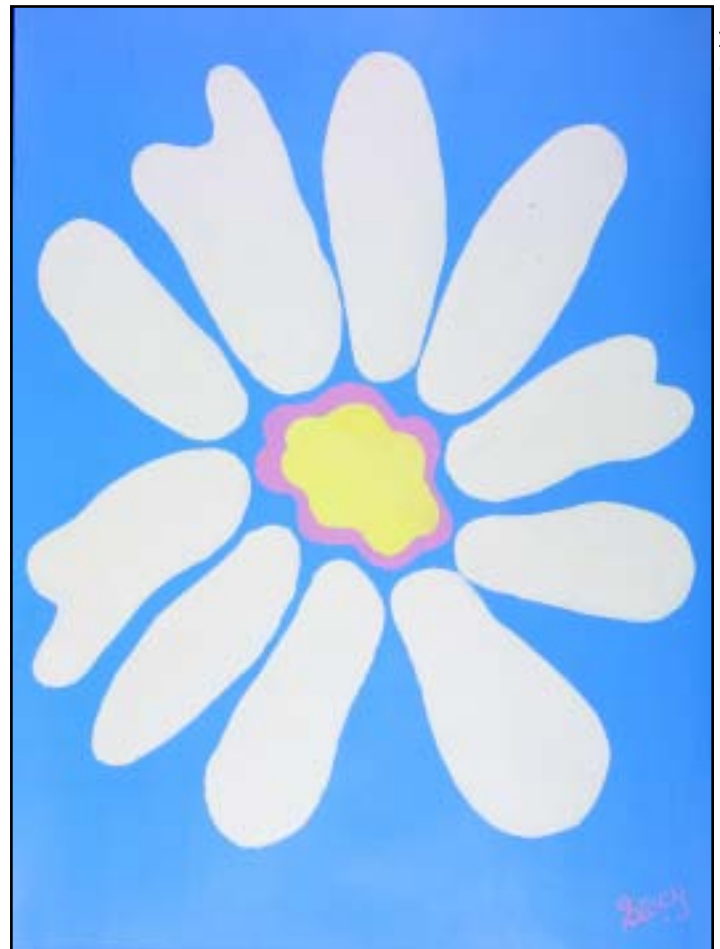
Resource Room Exhibitors

Visit these organizations' and individuals' exhibit space in Golden Gate C on Thursday, Friday, or Saturday.

- | | |
|--|---|
| ■ CommonWealth Purchasing Group | ■ Saint Vincent Catholic Medical Centers |
| ■ Substance Abuse and Mental Health Services Administration (SAMHSA) | ■ Carol Hall Originals |
| ■ GlaxoSmithKline | ■ National Health Care for the Homeless Council |
| ■ National Center on Family Homelessness | ■ Claims Review Corporation |
| ■ Center for Social Innovation | ■ Onsite Health Foundation |
| | ■ Health Education Council |

Saturday, June 5

- Traumatic Brain Injury
- Practice Based Research Network
- Pain Management
- Challenging Clinical Cases
- Suboxone Programs
- Workforce Development
- Mentoring Health Professions Students
- Health Center Growth and Application Issues: Using Health Reform Investments Wisely
- New Grantee Problem Solving
- Medication Management in Shelters
- Engaging Homeless Youth
- Homeless Provider Panel Size and Other Measures of Productivity
- Starting a Medical Respite Program
- Street Outreach Medicine
- Sex Offenders in Shelters



Stacy Golden

CONFERENCE ACCREDITATION

The desired result for this conference is an increased understanding of the health care needs of homeless people and the health care services that should be provided to them.

This conference is designed by HCH professionals for HCH professionals, including clinicians and their support staff; administrators; board members; and consumers of HCH services. It will also be of value to others who provide health care and support services to homeless people, as well as government officials and advocates.

At the conclusion of this activity, participants should be able to:

- Articulate unique elements of the HCH approach to patient care.
- Describe the experiences of consumers of HCH services, clinicians serving homeless people, and advocates for homeless people throughout the nation, as they work to maintain clinical quality, consumer participation, and interdisciplinary approaches in clinic care.
- Explain the systemic realities of barriers to care and methods to remove those barriers at clinic and community levels.

It is the policy of Vanderbilt School of Medicine and the National Health Care for the Homeless Council to require disclosure of financial relationships from individuals in a position to control the content of a CME activity; to identify and resolve conflicts of interest related to those relationships; and to make disclosure information available to the audience prior to the CME activity. Presenters are required to disclose discussions of unlabeled/unapproved uses of drugs or devices during their presentations. All course directors, planners, and speakers indicated no financial relationships to disclose.

This activity has been planned and implemented in accordance with the Essentials Areas and Policies of the Accreditation Council for CME (ACCME) through the joint sponsorship of Vanderbilt School of Medicine and the National Health Care for the Homeless Council. Vanderbilt School of Medicine is accredited by the Accreditation Council for Continuing Medical Education to provide continuing medical education for physicians.

Vanderbilt School of Medicine designates this educational activity for a maximum of 20.5 *AMA PRA Category 1 Credits*[™]. Physicians should only claim credit commensurate with the extent of their participation in the activity.

To obtain credit for your participation in this conference, have the barcode on your nametag scanned at each session you attend. You will receive email notification of online credit availability 1-2 weeks after data is submitted to Vanderbilt CME. You may access your record of participation at anytime by visiting the Division of CME web site at www.cme.vanderbilt.edu and following the instructions to obtain a transcript.

It is the policy of Vanderbilt School of Medicine and the National Health Care for the Homeless Council not to discriminate against any person on the basis of disabilities. If you feel you need services or auxiliary aids mentioned in this act

in order to fully participate in this continuing education activity, please contact Teri Simon (615/226-2292 or tsimon@nhhc.org.)

This educational activity received no commercial support.

Vanderbilt School of Medicine and the National Health Care for the Homeless Council express appreciation to GlaxoSmithKline for their support of this educational activity by providing exhibit fees.

Performing a post-course evaluation is part of the accreditation requirements that permit Vanderbilt to offer CME credit for physicians. Evaluation also provides planners of this course with information about how to improve future sessions.

Applicants are responsible for checking with certifying authorities in their states in advance of the conference regarding CME/CE reciprocity and for complying with attendance and documentation requirements. For more information, contact Teri Simon at 615-226-2292 or tsimon@nhhc.org.

Online Learning Opportunities

Did you know that the National Health Care for the Homeless Council offers these free CME-certified courses available at www.nhhc.org?

- Documenting Disability for Medical Providers
- Implementing Harm Reduction Strategies in Your Clinic
- Health Care for the Homeless 101

These courses provide excellent orientation for newcomers to the homeless health care field, as well as valuable professional development for experienced staff members. New courses will be added throughout the next year. Visit www.nhhc.org/onlinelearning.html to learn more.

Join the National Health Care for the Homeless Council

Individual Membership is open to anyone who supports the Council's mission, and is free of charge. Your membership begins when we receive your application, and ends only when you ask to be removed or when our messages to you are returned as undeliverable.

When you join as an Individual Member, you will be given the opportunity to also join one of our Individual Membership Groups:

- HCH Clinicians' Network
- National Consumer Advisory Board
- Respite Care Providers' Network

Visit the conference Resource Room or www.nhhc.org to learn more and join today.

2010 Conference Planning Committee

A Conference Planning Committee made important decisions about the topics to be addressed in conference workshops. Members of the Planning Committee, including Workshop Reviewers were:

Wayne Centrone (Co-Chair), NMD, MPH, Center for Social Innovation, Portland, OR
Jean Hochron (Co-Chair), MPH, Montgomery County Department of Health & Human Services, Rockville, MD
Allan Ainsworth, PhD, Wasatch Homeless Health Care, Inc., Salt Lake City, UT
Linda Barnet BSN, RN, Mercy Medical Center, Springfield, MA
Joseph Benson, Board Member and Chair Person of CAB, Health Care for the Homeless - Houston, Houston, TX
Deborah Borne, MD, MSW, Tom Waddell Health Center, San Francisco Department of Public Health, San Francisco, CA
Mollie Bresnahan, MEd, LCMHC, Health Care for the Homeless/Mercy Medical Center, Springfield, MA
Lily Catalano, BA, National Health Care for the Homeless Council, Nashville, TN
Bernadette Creaven, MN, RN, Carolyn Downs Family Medical Clinic, Seattle, WA

Barbara DiPietro, PhD, National Health Care for the Homeless Council, Baltimore, MD
Sabrina Edgington, MSSW, National Health Care for the Homeless Council, Nashville, TN
Larry Gottlieb, MSW, MPA, Eliot Community Human Services, Lexington, MA
Amy Grassetto, HOAP/Community Healthlink, Worcester, MA
Darlene Jenkins, DrPH, National Health Care for the Homeless Council, Nashville, TN
Tim Johnson, BA, BBA, Harmony House, Inc., Houston, TX
John Lozier, MSSW, National Health Care for the Homeless Council, Nashville, TN
Rachel Marzec, MS, FNP-C, PMHNP-C, Young Children's Health Center, UNM, Albuquerque, NM
Molly Meinbresse, MPH, National Health Care for the Homeless Council, Nashville, TN
Jennifer Metzler, MPH, Albuquerque Health Care for the Homeless, Inc., Albuquerque, NM
David Modersbach, CHW, BA, Alameda County Health Care for the Homeless Program, Oakland, CA
Eric Murry, MS, National Health Care for the Homeless Council, Nashville, TN
Alan Pickett, BSN, RN, Washtenaw County Outreach, Ann Arbor, MI

Brenda J. Proffitt, MHA, National Health Care for the Homeless Council, Albuquerque, NM
Heather Rippetoe, MA, MA, National Health Care for the Homeless Council, Nashville, TN
Karen Rotondo, BSN, RN, National Health Care for the Homeless Council, West Yarmouth, MA
Marianne Savarese, RN, BSN, HCH Manchester at CMC Community Health Services, Manchester, NH
Teri Simon, MSSW, National Health Care for the Homeless Council, Nashville, TN
Louise Treherne, MSW, LCSW-C, Health Care for the Homeless, Inc., Baltimore, MD
Preston Witt, BA, Harris County Hospital District, Health Care for the Homeless Program, Houston, TX
Cheryl Zlotnick, RN, MS, MPH, DrPH, Center for the Vulnerable Child, Children's Hospital, Oakland, CA

The Council gratefully thanks these individuals who have so helpfully participated in the planning of this conference.

National Health Care for the Homeless Council

Board of Directors 2009-2010

Marion Scott (President), MSN, RN, Missouri City, TX
Thomas Andrews (Vice President), BS, Saint Joseph's Mercy Care Services, Inc., Atlanta, GA
Ulysses Maner (Secretary), CPS, House of Hope, Inc., Fort Lauderdale, FL
Dawne Bell (Treasurer), MPA, CFRE, Carrie Tingley Hospital Foundation, Albuquerque, NM
Sheri Adams, MSW, LICSW, Metropolitan Development Council, Health Care for the Homeless, Tacoma, WA
Francis Afram-Gyening, MPH, FACHE, Care Alliance Health Center, Cleveland, OH
Allan Ainsworth, PhD, Wasatch Homeless Health Care, Inc., Salt Lake City, UT
Sarah Anderson, JD, Boston Health Care for the Homeless Program, Boston, MA
Nicholas Apostoleris, PhD, Community Health Connections, Inc., ACTION Health Services, Fitchburg, MA
Edward Bonin, MN, FNP-BC, Tulane Drop-In Health Services, New Orleans, LA
Sharon Brammer, CRNP, Franklin Primary Health Center, Inc., Mobile, AL
Mark Casanova, MA, Homeless Health Care Los Angeles, Los Angeles, CA
Jan Caughlan, MSW, LCSW-C, Health Care for the Homeless, Inc., Baltimore, MD
Wayne Centrone, NMD, MPH, Center for Social Innovation, Portland, OR
Barbara Conanan, MS, RN, Saint Vincent Catholic Medical Centers, New York, NY

Sarah Davidson, El Centro del Barrio, San Antonio, TX
Bob Donovan, MD, Cincinnati Health Network, Inc., Health Resource Center, Cincinnati, OH
Elaine Fox, MA, Public Health Management Corporation, Philadelphia, PA
Larry Gottlieb, MSW, MPA, Eliot Community Human Services, Lexington, MA
Amy Grassetto, HOAP/Community Healthlink, Worcester, MA
Timothy Johnson, BA, BBA, Harmony House, Inc., Houston, TX
Jennifer Metzler, MPH, Albuquerque Health Care for the Homeless, Inc., Albuquerque, NM
Heidi Nelson, MHSA, Heartland Health Outreach, Inc., Chicago, IL
Marianne Savarese, RN, BSN, HCH Manchester at CMC Community Health Services, Manchester, NH
Robert Taube, PhD, MPH, Boston Health Care for the Homeless Program, Boston, MA
Lisa Thompson, DNP, PMHNP-BC, Colorado Coalition for the Homeless - Stout Street Clinic, Denver, CO
Pia Valvassori, PhD, ARNP, Health Care Center for the Homeless, Inc., Orlando, FL
Barbara Wismer, MD, MPH, Tom Waddell Health Center, San Francisco Department of Public Health, San Francisco, CA

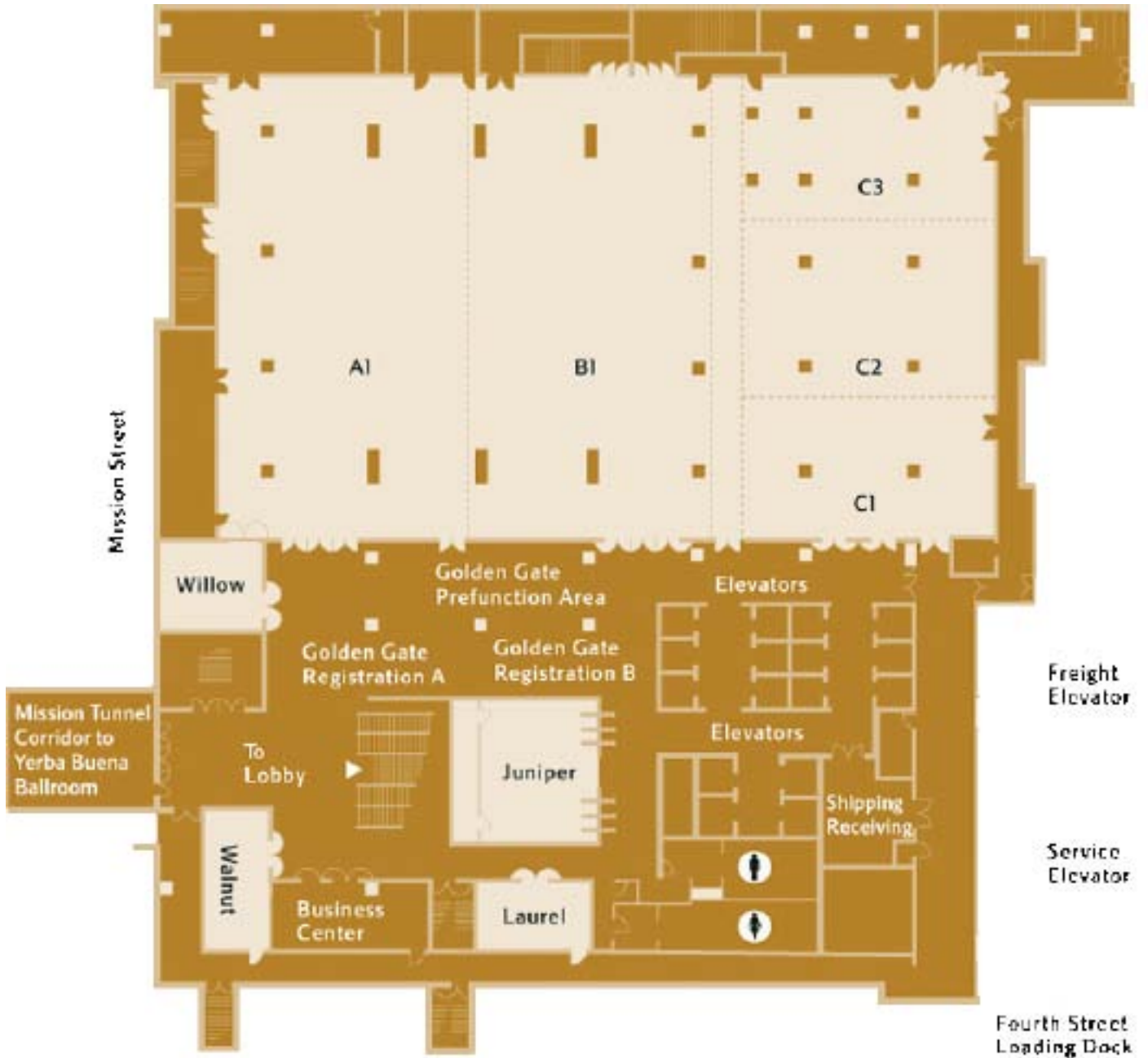
Staff and Major Contractors

John Lozier, MSSW, Executive Director
Sue Bredensteiner, BA, Health Writer
Polly Bullock, BS, Business Manager
Lily Catalano, BA, Conference Planner
Barbara DiPietro, PhD, Policy Director
Sabrina Edgington, MSSW, Policy Manager
Linda Guthrie, Website Manager
Darlene Jenkins, DrPH, Research Director
Molly Meinbresse, MPH, Research Associate & HCH Clinicians' Network Coordinator
Jill Moore, BS, Resource Development Manager
Eric Murry, MS, TennCare Shelter Enrollment Coordinator
Pat Petty, Administrative Coordinator
Brenda J. Proffitt, MHA, Membership & Communications Director
Heather Rippetoe, MA, MA, Learning Director
Karen Rotondo, BSN, RN, HCH Improvement Advisor
Teri Simon, MSSW, Learning Program Assistant
Patrina Twilley, MSW, Research Assistant
Lisa Williams, MBA, Finance Manager

We are grateful for the volunteers who are assisting in the execution of this conference.

National Health Care for the Homeless Council
P.O. Box 60427 Nashville, TN 37206-0427
615/226-2292 www.nhchc.org

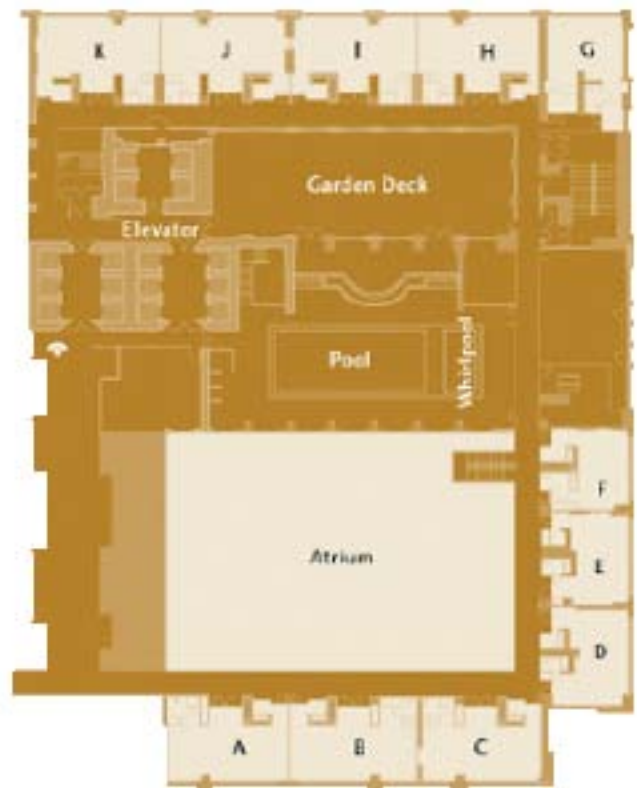
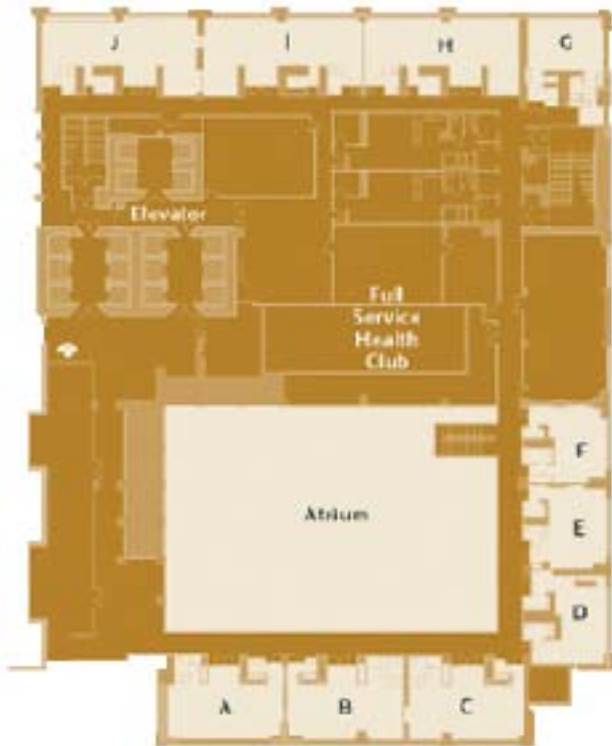
Golden Gate Hall, B2 Level



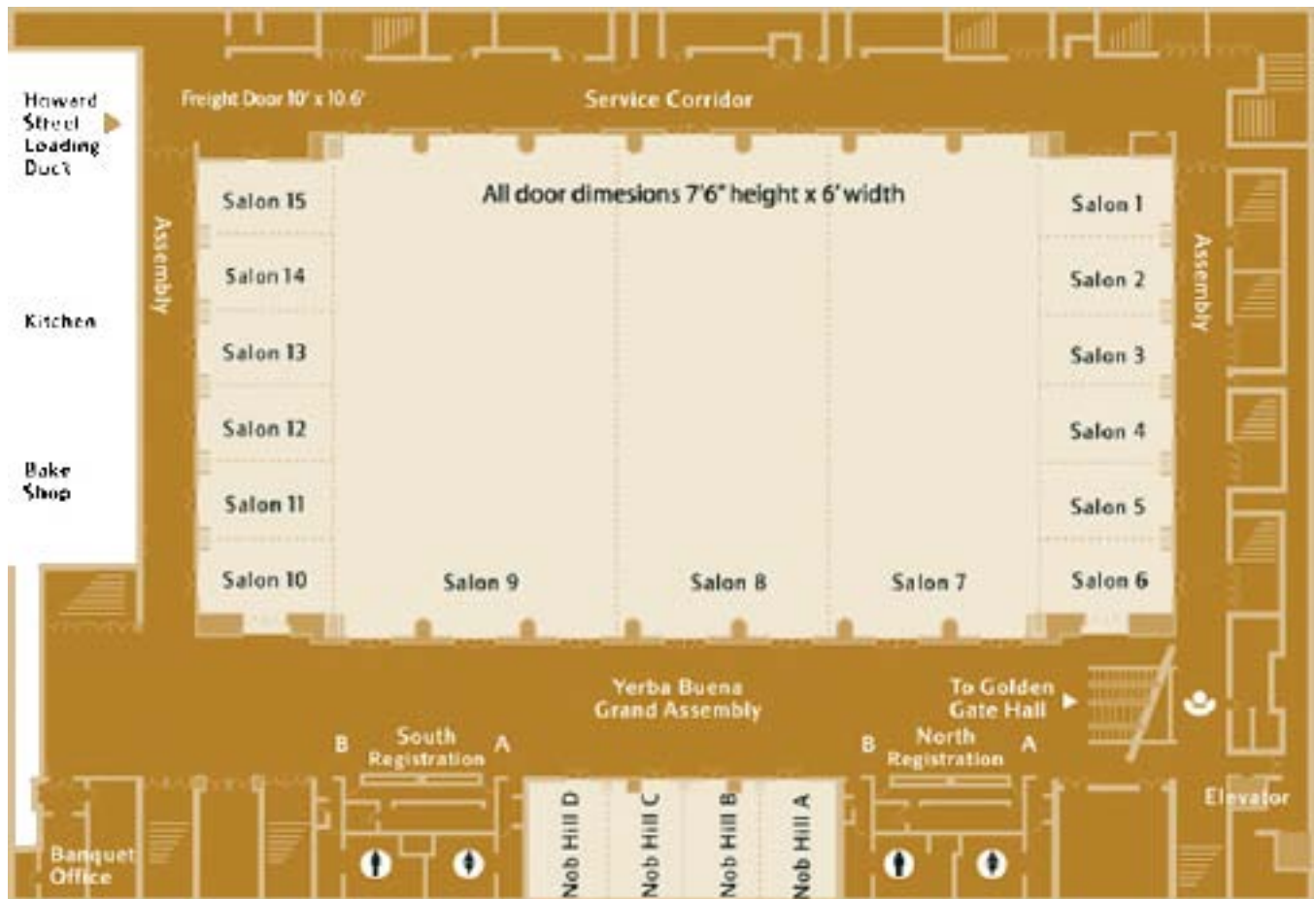
Pacific
(Fourth Floor)

**Pacific & Sierra Conference Suites,
Fourth and Fifth Level**

Sierra
(Fifth Floor)



Yerba Buena Ballroom, Lower B2 Level



NATIONAL
HEALTH CARE
for the
HOMELESS
COUNCIL

The National Health Care for the Homeless Council is a membership organization engaged in education, research, advocacy and peer support.

We recognize and believe that:

- Homelessness is unacceptable.
- Every person has the right to adequate food, housing, clothing and health care.
- All people have the right to participate in the decisions affecting their lives.
- Contemporary homelessness is the product of conscious social and economic policy decisions that have retreated from a commitment to insuring basic life necessities for all people.
- The struggle to end homelessness and alleviate its consequences takes many forms, including efforts to insure adequate housing, health care, and access to meaningful work.

The mission of the Council is to help bring about reform of the health care system to best serve the needs of people who are homeless, to work in alliance with others whose broader purpose is to eliminate homelessness, and to provide support to Council members.

We encourage you to participate in and support our work by becoming members and by making tax-deductible contributions. Please use forms available at the Council table in the Resource Room or visit us on-line at www.nhchc.org to do so.



See you next year!

2011 National Health Care for the Homeless
Conference & Policy Symposium
June 22-25, 2011, Washington, DC
Find more information at www.nhchc.org